

Duncan Bolt is an Authorized Distributor of Huck® Fasteners.

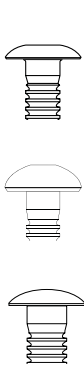
HuckBolts® for Truck Cabs

HuckBolts contribute to the overall strength, durability and performance of the vehicle throughout its lifetime. Trucks and chassis both benefit, ultimately demonstrating reduced warranty claims, and providing maintenance-free performance. Magna-Grip®, Magna-Lok® and C98LT are quality Huck parts and are in stock at Duncan Bolt.

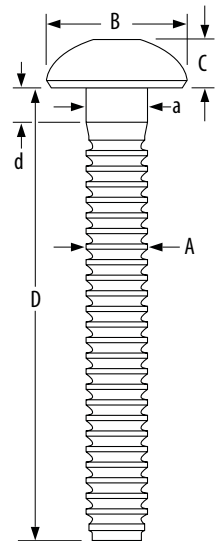


Magna-Grip®

Vibration-resistant, reliable grade 2 fasteners offering high uniform installed values with a wide grip range. A unique, lock-groove design ensures a secure installation.



Button Head (Brazier Head)				Max. Hole Size	A ref	B	C	D	a max	d ref
Size	Steel Part #	Aluminum #	Grip Range							
1/4 (8)	MGPB-R8-10G	MGPB-E8-10	.062 - .625	.281	.248	.480-.520	.109-.129	1.945-2.085	.259	.125
	MGPB-R8-20G	MGPB-E8-20	.625 - 1.25					2.580-2.680		.312
98T Rivet Head				Max. Hole Size	A ref	B	C	D	a max	d ref
Size	Steel Part #	Aluminum #	Grip Range							
3/16 (6)	MGP98T-R6-10G	MGP98T-E6-10	.062 - .625	.219	.186	.448-.488	.088-.108	1.778-1.828	.196	-
	MGP98T-R6-20G	MGP98T-E6-20	.625 - 1.250					2.360-2.410		.312
Truss Head				Max. Hole Size	A ref	B	C	D	a max	d ref
Size	Steel Part #	Aluminum #	Grip Range							
1/4 (8)	MGPT-R8-10G	MGPT-E8-10	.062 - .625	.281	.248	.542-.582	.100-.120	1.955-2.055	.259	.125
	MGPT-R8-20G	MGPT-E8-20	.625 - 1.250					2.550-2.650		.312



Installed Values in Nominal Grip (lbs.)

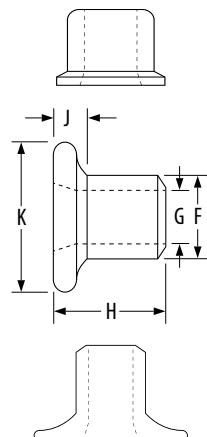
Diameter		Aluminum		Steel	
		Minimum	Typical	Minimum	Typical
3/16 (6)	Shear	750	1000	1725	2000
	Tensile	900	1300	1650	2700
	Clamp	550	800	1025	1500
1/4 (8)	Shear	1200	1600	2200	2700
	Tensile	1620	2500	2950	4000
	Clamp	950	1400	1350	2000

Magna-Grip® Benefits

- » Unmatched installation speed
- » Low overall installation cost
- » Vibration resistance
- » Flush-breaking pin
- » Quiet non-torque tools
- » No repetitive stress injuries
- » Eliminates need for secondary operations
- » No special training or skills required for operators



With Magna-Grip fasteners, quality installations do not depend upon the skill of the worker or a correctly calibrated tool. They install in seconds (up to 1,200 per hour) and require no more than a glance to confirm a correct installation: *If the core pin is flush with the collar, the Magna-Grip fastener is properly installed!*



Magna-Grip® Collars

Standard Flange			(S)= Steel (A)= Aluminum				
Size	Steel #	Aluminum #	F	G	H	J ref	K
3/16	MGC-R6U	MGC-F6	.305-.315	(S) .187-.197	.267-.283	.050	.360-.390
				(A) .194-.204			
1/4	MGC-R8U	MGC-F8	.395-.405	.250-.260	.367-.383	.062	.485-.515
Medium Flange (Peterbilt)							
3/16	MGCS-R6U	--	.305-.315	(S) .187-.197	.294-.303	.100	.490-.540
				(A) .194-.204			
Wide Flange							
3/16	MGCW-R6U	--	.305-.315	(S) .187-.197	.290-.320	.100	.635-.760
				(A) .194-.204			
1/4	MGCW-R8U	--	.395-.405	.250-.260	.427-.467	.130	.850-1.10



Not all items are represented in this book. Call your Duncan Bolt sales office for complete stock status.

Duncan Bolt is an Authorized Distributor of Huck® Fasteners.

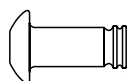
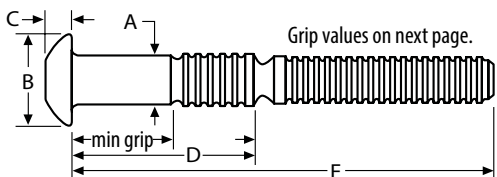
HuckBolts® for Truck Trailers

The structural strength of any trailer is dependent upon how strong the fasteners are themselves. HuckBolts provide the joint strength and overall durability to a variety of common trailer assembly applications. No matter the industry, Huck provides fasteners that are built to last.

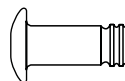


C6L®

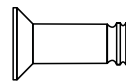
The classic 6-groove locking fastener is ideal for a wide range of applications that require a strong, vibration-resistant seal.



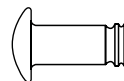
Round Head (C6LB)



Truss Head (C6LT)



Flush Head (C6L90)

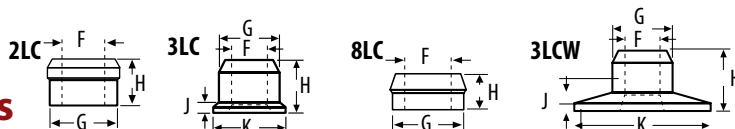


Rivet Head (C98LT)

Dimensions	Round Head			Truss Head		Flush Head		Rivet Head	
Diameter	A	B	C	B	C	B	C	B	C
3/16 (6)	.190 - .195	.360 - .390	.113 - .125	.406 - .469	.078 - .088	--	--	.469	.094
1/4 (8)	.254 - .259	.475 - .525	.136 - .152	.531 - .594	.103 - .115	.437 - .473	.104 - .113	--	--
5/16 (10)	.317 - .322	.594 - .656	.181 - .201	.703 - .797	.127 - .141	--	--	--	--
3/8 (12)	.380 - .385	.713 - .787	.223 - .248	.828 - .922	.186 - .202	--	--	--	--

C6L's exclusive locking groove design ensures a permanent fit that resists loosening. That means it's ideal for applications from general manufacturing to such high-vibration applications as HVAC, trailer and container assembly, rotary and rotating equipment, shopping carts, railroad and transit cars, geodesic structures, and many others.

C6L® Collars



Collar Type	Diameter	F	G	H	J (1,2)	K
Standard (2LC)	3/16 (6)	.187 - .196	.304 - .311	.220 - .260	--	--
	1/4 (8)	.256 - .265	.402 - .409	.290 - .320	--	--
	5/16 (10)	.304 - .310	.485 - .494	.350 - .380	--	--
	3/8 (12)	.375 - .385	.590 - .600	.430 - .460	--	--
Flange (3LC)	3/16 (6)	.187 - .196	.304 - .311	.250 - .280	.031 - .062	.359 - .391
	1/4 (8)	.256 - .267	.402 - .409	.349 - .379	.047 - .078	.484 - .516
	5/16 (10)	.304 - .312	.498 - .507	.394 - .426	.062 - .094	.609 - .641
	3/8 (12)	.378 - .390	.599 - .610	.502 - .532	.062 - .125	.719 - .781
Low Profile (8LC)	3/16 (6)	.187 - .196	.304 - .311	.132 - .162	.064	--
	1/4 (8)	.256 - .265	.402 - .409	.172 - .202	.125	--
	3/8 (12)	.375 - .385	.590 - .600	.303 - .373	.156	----
Wide Flange (3LCW)	1/4 (8)	.253 - .272	.400 - .409	.410 - .480	.105 - .156	.853 - 1.022
	5/16 (10)	.304 - .312	.498 - .507	.474 - .506	.144 - .196	.984 - 1.016

(1) When using 3LC collars, add "J" dimension to thickness of material being fastened to determine grip number.

(2) When using 8LC collars, subtract "J" dimension from thickness of material being fastened to determine grip number.



Installed Fastener Values

Minimum installed values in pounds.

Diameter	Carbon Steel Pins			2024 Aluminum Pins			6061 Aluminum Pins			Stainless Steel Pins		
	2LC-R or 3LC-R Collars			2LC-F or 3LC-F Collars			LC-1 or 3LC-1 Collars			2LC-2CU or 3LC-2CU Collars		
	Shear	Clamp	Tensile	Shear	Clamp	Tensile	Shear	Clamp	Tensile	Shear	Clamp	Tensile
3/16 (6)	1725	1025	1650	1050	550	1000	775	350	530	2000	1025	1455
1/4 (8)	3050	1805	3000	1875	950	1800	1375	620	975	3550	1805	2750
5/16 (10)	4725	2810	4600	2925	1500	2850	2125	965	1550	5525	2810	4250
3/8 (12)	6825	4020	6500	4200	2200	4200	3050	1380	2400	7950	4020	6100

Not all items are represented in this book. Call your Duncan Bolt sales office for complete stock status.



Duncan Bolt is an Authorized Distributor of Huck® Fasteners.

C6L® Grip Table- 3/16 & 1/4

Part numbers below reflect Round Head, Carbon Steel, Zinc Plated bolts. See dimension diagram on previous page for E and F measurements.

Grip	Grip Range	3/16 (6)			1/4 (8)		
		Part#	E	F	Part#	E	F
2	0.063 - 0.188	C6LB-R6-2G	0.394	1.404	C6LB-R8-2G	0.485	1.520
3	0.125 - 0.250	C6LB-R6-3G	0.457	1.466	C6LB-R8-3G	0.548	1.583
4	0.188 - 0.313	C6LB-R6-4G	0.519	1.529	C6LB-R8-4G	0.610	1.645
5	0.250 - 0.375	C6LB-R6-5G	0.582	1.591	C6LB-R8-5G	0.673	1.708
6	0.313 - 0.438	C6LB-R6-6G	0.644	1.654	C6LB-R8-6G	0.735	1.770
7	0.375 - 0.500	C6LB-R6-7G	0.707	1.716	C6LB-R8-7G	0.798	1.833
8	0.438 - 0.563	C6LB-R6-8G	0.769	1.779	C6LB-R8-8G	0.860	1.895
9	0.500 - 0.625	C6LB-R6-9G	0.832	1.841	C6LB-R8-9G	0.923	1.958
10	0.563 - 0.688	C6LB-R6-10G	0.894	1.904	C6LB-R8-10G	0.985	2.02
11	0.625 - 0.750	C6LB-R6-11G	0.957	1.966	C6LB-R8-11G	1.048	2.083
12	0.688 - 0.813	C6LB-R6-12G	1.019	2.029	C6LB-R8-12G	1.110	2.145
13	0.750 - 0.875	C6LB-R6-13G	1.082	2.091	C6LB-R8-13G	1.173	2.208
14	0.813 - 0.938	C6LB-R6-14G	1.144	2.154	C6LB-R8-14G	1.235	2.270
15	0.875 - 1.000	C6LB-R6-15G	1.207	2.216	C6LB-R8-15G	1.298	2.333
16	0.938 - 1.063	C6LB-R6-16G	1.269	2.279	C6LB-R8-16G	1.360	2.395
14	1.000 - 1.125	C6LB-R6-17G	1.332	2.341	C6LB-R8-17G	1.423	2.458
18	1.063 - 1.188	C6LB-R6-18G	1.394	2.404	C6LB-R8-18G	1.458	2.520
19	1.125 - 1.250	C6LB-R6-19G	1.457	2.466	C6LB-R8-19G	1.548	2.583
20	1.188 - 1.313	C6LB-R6-20G	1.519	2.529	C6LB-R8-20G	1.610	2.645
21	1.250 - 1.375	C6LB-R6-21G	1.582	2.591	C6LB-R8-21G	1.673	2.708
22	1.313 - 1.438	C6LB-R6-22G	1.644	2.654	C6LB-R8-22G	1.735	2.770
23	1.375 - 1.500	C6LB-R6-23G	1.707	2.716	C6LB-R8-23G	1.798	2.833
24	1.438 - 1.563	--	--	--	C6LB-R8-24G	1.866	2.895
25	1.500 - 1.625	--	--	--	C6LB-R8-25G	1.923	2.958
26	1.563 - 1.688	--	--	--	C6LB-R8-26G	1.985	3.020
27	1.625 - 1.750	--	--	--	C6LB-R8-27G	2.048	3.083
28	1.688 - 1.813	--	--	--	C6LB-R8-28G	2.110	3.145
29	1.750 - 1.875	--	--	--	C6LB-R8-29G	2.173	3.208
30	1.813 - 1.938	--	--	--	C6LB-R8-30G	2.235	3.270
31	1.875 - 2.000	--	--	--	C6LB-R8-31G	2.298	3.333
32	1.938 - 2.063	--	--	--	C6LB-R8-32G	2.368	3.395
37	--	--	--	--	C6LB-R8-37G	2.637	3.708



Build a C6L Huckbolt® part #

C6L (Style)- (Material) (Diameter)- (Grip #) (Finish)

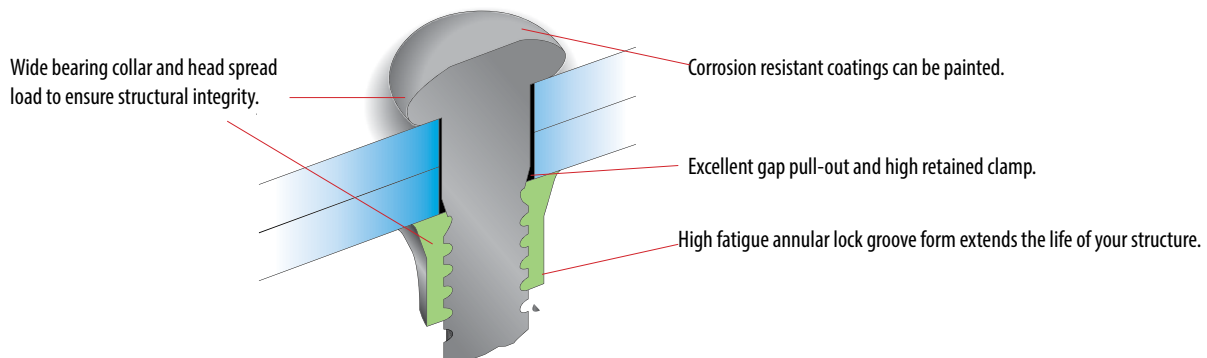
Style	Material	Diameter	Finish
Round Head C6LB	Carbon Steel R	3/16 6	Zinc G
Truss Head C6LT	2024 Alum Alloy C	1/4 8	
Flush Head C6L90	6061 Alum Alloy F	5/16 10	
Rivet Head C98LT	Stainless Steel U	3/8 12	

- » "Grip" is actual thickness of material to be fastened.
- » C6L90 is not available in grip 2 for 3/16 and 1/4 diameters.
- » C6L90 is not available in grip 4 for 3/8 diameter.

C6L® Grip Table- 5/16 & 3/8

Part numbers below reflect Round Head, Carbon Steel, Zinc Plated bolts. See dimension diagram on previous page for E and F measurements.

Grip	Grip Range	5/16 (10)			3/8 (12)		
		Part#	E	F	Part#	E	F
4	0.125 - 0.375	CL6B-R10-4G	0.749	1.906	CL6B-R12-4G	0.809	2.125
6	0.250 - 0.500	CL6B-R10-6G	0.874	2.031	CL6B-R12-6G	0.934	2.250
8	0.375 - 0.625	CL6B-R10-8G	1.000	2.156	CL6B-R12-8G	1.059	2.375
10	0.500 - 0.750	CL6B-R10-10G	2.281	2.281	CL6B-R12-10G	1.184	2.500
12	0.625 - 0.875	CL6B-R10-12G	2.406	2.406	CL6B-R12-12G	1.309	2.625
14	0.750 - 1.000	CL6B-R10-14G	2.531	2.531	CL6B-R12-14G	1.434	2.750
16	0.875 - 1.125	CL6B-R10-16G	2.656	2.656	CL6B-R12-16G	1.559	2.875
18	1.000 - 1.250	CL6B-R10-18G	2.781	2.781	CL6B-R12-18G	1.684	3.000
20	1.125 - 1.375	CL6B-R10-20G	2.906	2.906	CL6B-R12-20G	1.809	3.125
22	1.250 - 1.500	CL6B-R10-22G	3.031	3.031	CL6B-R12-22G	1.934	3.250
24	1.375 - 1.625	CL6B-R10-24G	3.156	3.156	CL6B-R12-24G	2.059	3.375
26	1.500 - 1.750	CL6B-R10-26G	3.281	3.281	CL6B-R12-26G	2.184	3.500
28	1.625 - 1.875	CL6B-R10-28G	3.406	3.406	CL6B-R12-28G	2.309	3.625
30	1.750 - 2.000	CL6B-R10-30G	3.531	3.531	CL6B-R12-30G	2.434	3.750
32	1.875 - 2.125	CL6B-R10-32G	3.656	3.656	CL6B-R10-32G	2.559	3.875



Not all items are represented in this book. Call your Duncan Bolt sales office for complete stock status.

Duncan Bolt is an Authorized Distributor of Huck® Fasteners.

Magna-Lok®

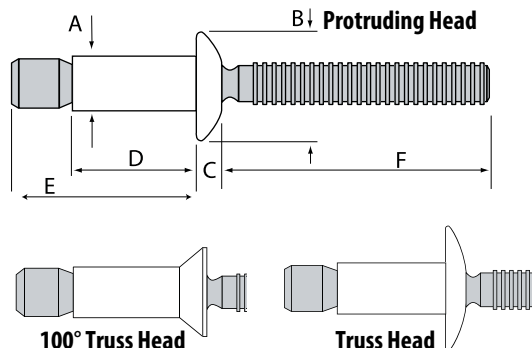
Hole filling fastener with excellent gap pull-out and moisture resistance. Solid circle lock creates internal lock that virtually eliminates pin push-out.



Protruding Head						Dimensions are same unless noted by (R, B or U).					
Size	Steel (R)	Aluminum (B)	Stainless (U)	Grip Range	Hole Size	A Nom	B Max	C Max	D Max	E Max	F Min
3/16 (6)	MGLP-R6-4	MGLP-B6-4	MGLP-U6-4	.062 - .270	.191 - .201	.187	.385 .392(U)	.085 .101 (U)	.415	.733 / .728 (U)	.980 / .969 (U)
	MGLP-R6-7	MGLP-B6-7	MGLP-U6-7	.214 - .437					.582	.892 / .889 (U)	.968 / .955 (U)
	MGLP-R6-E	MGLP-B6-E	MGLP-U6-E	.062 - .437					.582	1.031 / 1.026 (U)	.991 / .98 (U)
1/4 (8)	MGLP-R8-6	MGLP-B8-6	MGLP-U8-6	.080 - .375	.261 - .272	.253	.530	.120	.560	.984	1.043 1.046 (B)
	MGLP-R8-10	MGLP-B8-10	MGLP-U8-10	.350 - .625					.810	1.234	
	MGLP-R8-E	MGLP-B8-E	MGLP-U8-E	.080 - .272					.810	1.419 / 1.415 (B)	
3/8 (12)	MGLP-R12-12	MGLP-B12-12	MGLP-U12-12	.120 - .625	.392 - .408	.386	.793	.175	.845	1.476	1.545
Truss Head											
3/16 (6)	MGLT-R6-4	MGLT-B6-4	MGLT-U6-4	.062 - .270	.191 - .201	.187	.530	.095 / .104 (U)	.415	.733	.973 / .964 (U)
	MGLT-R6-E	MGLT-B6-E	--	.062 - .437				.095	.582	1.031	.984
1/4 (8)	MGLT-R8-6	MGLT-B8-6	--	.080 - .375	.261 - .272	.253	.592	.120	.560	.984	1.043 1.046 (B)
100° Flush Head											
3/16 (6)	MGL100-R6-6	MGL100-B6-6	MGL100-U6-6	.125 - .331	.191 - .201	.187	.350	.080	.490	.809 / .804 (U)	.984 / .992 (U)
	MGL100-R6-9	MGL100-B6-9	MGL100-U6-9	.305 - .500					.660	.968 / .965 (U)	.975 / .978 (U)
1/4 (8)	MGL100-R8-8	MGL100-B8-8	MGL100-U8-8	.160 - .475	.261 - .272	.253	.410	.090	.665	1.089 / 1.085 (U)	1.055
	MGL100-R8-12	MGL100-B8-12	MGL100-U8-12	.415 - .725					.915	1.339 / 1.335 (U)	1.058 (B) / 1.059 (U)

Installed Values in Nominal Grip (lbs.)

Material		Shear		Tensile		Pin Retention	
		Minimum	Typical	Minimum	Typical	Minimum	Typical
Steel	3/16	1300	1450	1000	1200	150	250
	1/4	2500	2750	1850	2200	300	400
	3/8	6000	6300	4000	5000	600	1000
Aluminum	3/16	600	700	500	580	75	150
	1/4	1300	1300	890	950	100	220
	3/8	2950	3000	1900	2100	250	450
Stainless Steel	3/16	1300	1400	950	1100	100	125
	1/4	2350	2500	1800	2000	200	250



For applications requiring a wide grip range, or multiple applications with similar requirements, the extended-grip Magna-Lok® is capable of spanning the range of several conventional blind rivets. This versatility can eliminate as many as six standard rivets, reducing inventory, rework, and cost.

C98LT

Fastener for decorative areas such as truck grilles. Stainless steel with polished heads. 3/16" diameter, 25/bag.

Part #	Grip Range
C98LT-U6-3BR	1/8 - 1/4
C98LT-U6-5BR	1/4 - 3/8
C98LT-U6-7BR	3/8 - 1/2
C98LT-U6-9BR	1/2 - 5/8
C98LT-U6-12BR	11/16 - 13/16

Collar part #
2LC-R6G



Not all items are represented in this book. Call your Duncan Bolt sales office for complete stock status.



Duncan Bolt is an Authorized Distributor of Huck® Fasteners.

Hucktainer®

Two-piece 3/8" specialty fastener for fiberglass reinforced plywood, metal clad panels, and other composite materials.

Grip Data - Standard			Dimensional Data- Standard			
Grip Number	Grip Range		A	B	C	D
	Min	Max				
9	.500	.625	.562	2.170	--	0.170
10	.562	.687	.624	2.232	.154	.079
11	.625	.750	.687	2.295	.217	.142
12	.687	.812	.749	2.357	.279	.204
13	.750	.875	.812	2.420	.342	.267
14	.812	.937	.874	2.482	.404	.329
15	.875	1.000	.937	2.548	.467	.392
16	.937	1.062	.999	2.607	.529	.454
17	1.000	1.125	1.062	2.670	.592	.517
18	1.062	1.187	1.124	2.732	.654	.579
19	1.125	1.250	1.187	2.795	.717	.642
20	1.187	1.312	1.249	2.857	.779	.704
21	1.250	1.375	1.312	2.920	.842	.767
22	1.312	1.437	1.374	2.982	.904	.829
23	1.375	1.500	1.437	3.045	.967	.892
24	1.437	1.562	1.499	3.107	1.029	.954
25	1.500	1.625	1.562	3.170	1.092	1.017
26	1.562	1.687	1.625	3.232	1.154	1.079
27	1.625	1.750	1.687	3.295	1.217	1.142
28	1.687	1.812	1.750	3.357	1.279	1.204
29	1.750	1.875	1.812	3.420	1.342	1.267
30	1.812	1.937	1.875	3.482	1.404	--

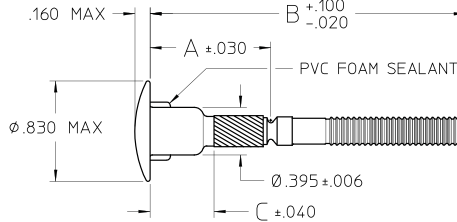
Note: Only wide bearing pin HLPE () and/or wide bearing sleeve HLPS should be used directly against FRP.

Grip Data - Short Grip			Dimensional Data - Short Grip			
Grip Number	Grip Range		A	B	C	D
	Min	Max				
7	.375	.500	.500	2.120	--	--
8	.437	.562	.562	2.182	.125	.050
9	.500	.625	.624	2.244	.187	--

Note: Only wide bearing pin HLPSC () and or wide bearing sleeve HLPSC should be used directly against FRP.
Consult for stock status; minimums may apply.

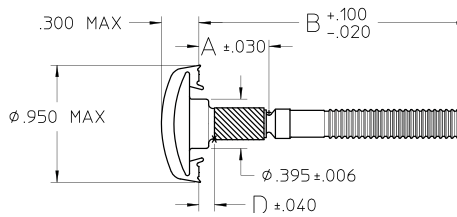
Standard Low Profile Head HLPP-R12- ()

Short Grip Standard Low Profile Head HLPSC-R12- ()



Standard Medium Bearing Encapsulated Head HLPM (*)-R12- ()

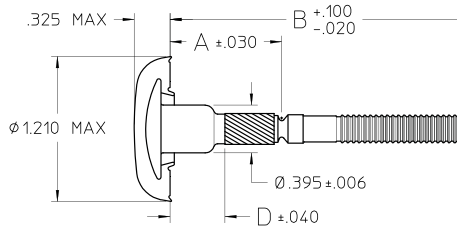
Standard Grip Medium Bearing Encapsulated Head HLPSCM (*)-R12- ()



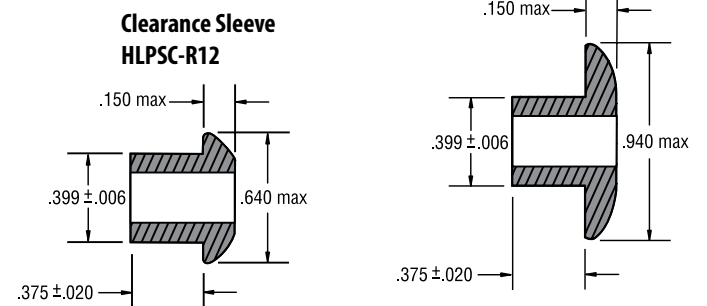
- * Encapsulated Color
- W White
- G Gray
- RY Ryder yellow
- HY Hertz Yellow

Standard Wide Bearing Encapsulated Head HLPE (*)-R12- ()

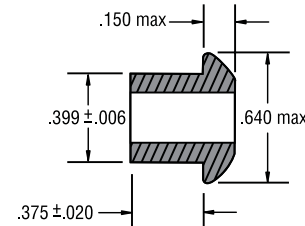
Short Grip Wide Bearing Encapsulated Head HLPSCGE (*)-R12- ()



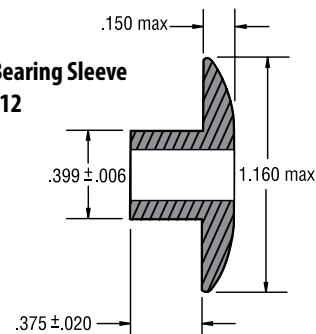
Medium Bearing Sleeve HLPSC-R12



Clearance Sleeve HLPSC-R12



Large Bearing Sleeve HLPSC-R12



Not all items are represented in this book. Call your Duncan Bolt sales office for complete stock status.

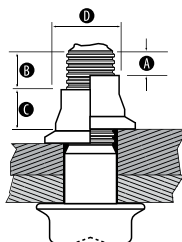
Duncan Bolt is an Authorized Distributor of Huck® Fasteners.

HuckBolts® for Truck Frames

HP8® Powerbolt™

Provides an easy-to-use system that delivers a permanent, vibration resistant clamp.

Headmark Grip #	Grip Range (inches)	Aftermarket Fastener		
		1/2" (16)	5/8" (20)	3/4" (24)
8	0.250 - 0.750	HP8F-DT16-8	HP8F-DT20-8	--
12	0.500 - 1.000	HP8F-DT16-12	HP8F-DT20-12	HP8F-DT24-12
16	0.750 - 1.250	--	--	--
20	1.000 - 1.500	HP8F-DT16-20 HP880-20-20	HP8F-DT20-20	HP8F-DT24-20
24	1.250 - 1.750	--	--	--
28	1.500 - 2.000	HP8F-DT16-28 HP880-20-28	HP8F-DT20-28	HP8F-DT24-28
32	1.750 - 2.250	HP8F-DT16-32	--	--
36	2.000 - 2.500	HP8F-DT16-36	HP8F-DT20-36	HP8F-DT24-36
44	2.500 - 3.00	--	HP8F-DT20-44	--
Collar	--	HPCF-R16U	HPCT-R20U	HPCF-R24U



HP8® Inspection Data- Round Head, Inch Series				
Diameter	A (min)	B (max)	C (min)	D (max)
DT16	.10	.65	.56	.760
DT20	.12	.67	.73	.945
DT24	.12	.67	.86	1.132

A properly installed HuckBolt® fastener will possess the dimensional characteristics tabulated. Should the "A" dimension fall below or the "B" dimension exceed the indicated value, the fastener is being used out of grip. A "C" dimension less than the tabulated value indicates an incorrect or worn anvil on the nose assembly. A "D" dimension greater than the given values indicates an incorrect or worn anvil on the nose assembly.

HP8® Fastening Kits

For Sale and Rental

Nose Assemblies		Hoses		Tools	
Size	Part #	Size	Part #	Size	Part #
1/2"	99-5308	12'	118309-12	1/2" & 5/8" only	2624
5/8"	99-5301	26'	118309-26	1/2"-3/4"	2628
3/4"	99-5303	--	--	--	--



Huck 360®

The most advanced nut-and-bolt fastening system on the market. It resists vibration loosening, no matter how extreme the environment. It offers quick installation and removal with conventional tools, delivers superior fatigue strength, and holds tight under high spike loads.

Inch Huck 360® Grade 8 Bolts - 3/8, 7/16, 1/2, 5/8, 3/4, 7/8, 1

Up to 6 3/4" length

Material: Medium carbon alloy steel

Finish: Black oiled or Geomet

Inch Huck 360® Nuts- 3/8, 7/16, 1/2, 5/8, 3/4, 7/8, 1

ASTM F436 hardened washers recommended

Material: Low carbon steel

Finish: Zinc Electroplate with Red Dye Chromate or Geomet

Metric Huck 360® Class 10.9 Bolts- 10mm, 12mm, 14mm, 16mm, 20mm, 24mm, 36mm

Up to 300mm length

Material: Medium carbon alloy steel

Finish: Black oiled or Geomet

Metric Huck 360® Nuts- 10mm, 12mm, 14mm, 16mm, 20mm, 24mm, 36mm

ASTM F436 hardened washers recommended

Material: Low carbon steel

Finish: Zinc Electroplate with Red Dye Chromate or Geomet



Huck 360® Benefits

- » Resists vibration loosening
- » Withstands high spike loads
- » Increases equipment uptime
- » Installs 300% faster than conventional locknuts
- » Can be installed and removed with conventional tools

Not all items are represented in this book. Call your Duncan Bolt sales office for complete stock status.



Duncan Bolt is an Authorized Distributor of Huck® Fasteners.

The Huck BobTail® System

BobTail® is designed to deliver superior joining strength in even the most extreme environments. Available in a wide range of sizes and grades, BobTail also offers quick and easy installation, and up to 10 times the fatigue strength of conventional nuts and bolts.



BobTail® HuckBolts®

Unlike conventional nuts and bolts, which have gaps on the thread flanks even when tightened, the BobTail system is designed for full metal-to-metal contact around the bolt thread by the collar. An installed BobTail has no gaps and delivers a more secure connection, providing reliability even in the most sever environments.

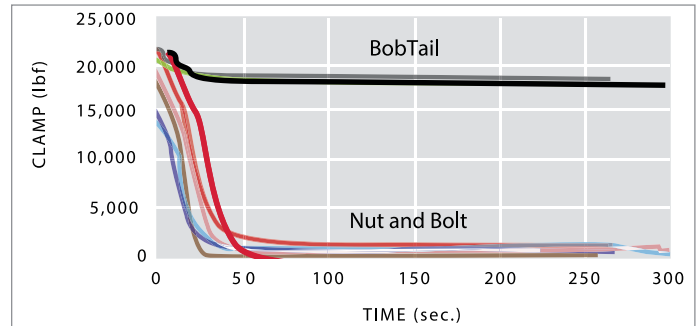


The swaged collar forms over the lock thread, and eliminates the gap.



Regular nuts and bolts have gap, which allows for loosening by vibration.

Transverse Vibration Comparison-14mm class 10.9



This chart shows nut and bolt clamp scatter is much wider compared to BobTail, and that once vibration begins, clamp load quickly decays conventional nuts and bolts, while it holds constant with the BobTail.

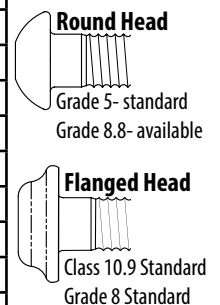
Quick Visual Inspection



The installation indicator in the collar flange (a proprietary Huck design) indicates the BobTail collar has been fully swaged on.

Standard Head Style and Strength- Large Diameter

Diameter	Round Head	Flanged Head
1/2	Grade 5	Grade 8
5/8	Grade 5	Grade 8
3/4	Grade 5	Grade 8
7/8	Grade 5	Grade 8 upon request
1	Grade 8	Grade 5
12mm	Class 8.8 upon request	Class 10.9
14mm	Class 8.8	Class 10.9, Class 8.8
16mm	Class 8.8 upon request	Class 10.9
20mm	Class 8.8 upon request	Class 10.9



More head styles available upon request.

BobTail® Benefits

- » No pintail
- » Unmatched installation speed
- » Low overall installed cost
- » Superior strength (fatigue)
- » Vibration resistance
- » Ergonomically designed installation tooling
- » Silent installation
- » No repetitive stress injuries
- » Eliminates need for secondary operations
- » No special training or skills required for installation personnel
- » Quick visual inspection is all that's needed for a quality-assured joint

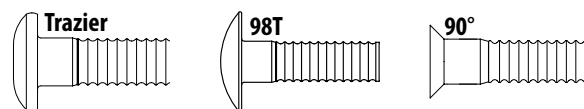


Head Style and Material Options- Small Diameter

Available Sizes: 3/16, 1/4, 5/16, 3/8

Materials: Grades 2 and 5 Carbon Steel, Aluminum, Stainless Steel

Headstyles: Trazier, 98T, 90°



Not all items are represented in this book. Call your Duncan Bolt sales office for complete stock status.

Duncan Bolt is an Authorized Distributor of Huck® Fasteners.

Huck® Tooling

Pneudraulic Cab Tooling

Fastener	Size	Nose	Tool #	Comments
C6L®	3/16	99-3003	2025	Standard Nose
	1/4	99-3006	2025	
	3/8	99-100-245	255, 256	
Magna- Grip®	3/16	99-3201	2025	Standard Nose
		99-3206	256	M.T.O Nose
	1/4	99-3204	2025	Standard Nose
		99-3207	256	
	3/8	99-1440	256	
Magna-Lok® Huck-Lok®	3/16	99-3303	202, 2025	Heavy Duty
		99-3300	202, 2025	Economy- Light Duty
	3/16 & 1/4	99-3487-68	202, 2025	Repair Only
	1/4	99-3305	202, 2025	Heavy Duty
		99-3301	202, 2025	Economy- Light Duty
	5/16	99-3307	255, 256	Standard Nose
	3/8	99-3318	255, 256	Standard Nose
Hucktainer®	3/8	99-3464	2025	Standard Nose

Truck Frame Tooling

Fastener	Size	Nose	Tool #	Comments
HP8® Huckfit	1/2	99-5308	2628, 3585	M.T.O
	5/8	99-5301	2628, 3585	Standard Nose
	3/4	99-5303	2628, 3585	Standard Nose
	12 MM	99-5401	2628, 3585	M.T.O.
	16 MM	99-5301	2628, 3585	Standard Nose
	20 MM	99-5403	2628, 3585	Repair Only
	20 MM	99-5414	2630	Standard Nose
BobTail®	1/2	99-7835	3585PT*	For removal nose add CX to p/n. Installation will require an optional pressure gauge.
	5/8	99-7831		
	3/4	99-7836		
	12 MM	99-7830		
	14 MM	99-7834		
	16 MM	99-7831		
	20 MM	99-7832		

* 3585 PT Tool comes with 16 foot hydraulic hoses attached. All other tools will require an additional hose kit which are available in 12' & 26' lengths.



Huck 940 Powerig®



The Model 940 Powerig® is a portable unit sized for moderate production and repair applications. This unit features rugged construction for durability in the field, and the choice of 115 or 220 Volt AC power. The Model 940 includes a handle for easy transport, simple adjustable hydraulic outputs and quick-connect couplers for connecting installation tool hoses.

Hydraulic Unit with 3585 tool.

Tool Repairs and Rentals

Duncan Bolt is an authorized West Coast Warranty Repair Center for Alcoa/ Huck tools. We have two factory trained repair specialists on site and offer rentals, while yours is under repair! We also repair most Hydraulic and Pneudraulic riveters: AVK®, POP®, Avdel®, Cherry®, Gesipa®, FAR®, Lobster® and Marson®. *For more information, email: toolrepair@duncanbolt.com*



Not all items are represented in this book. Call your Duncan Bolt sales office for complete stock status.

