

Blind Rivets

Grip-Rite SureSet™ Rivets

Precision two-piece, all-metal fastener ideally suited for use in blind (one side access only) and non-blind applications. Can be used with just about any combination of materials. Available in domed, large flange and 120° flush head styles.

SureSet™ Domed Head

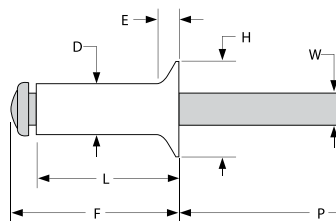
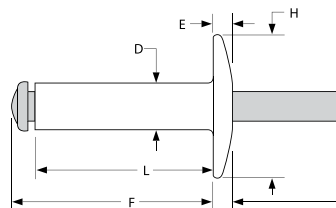
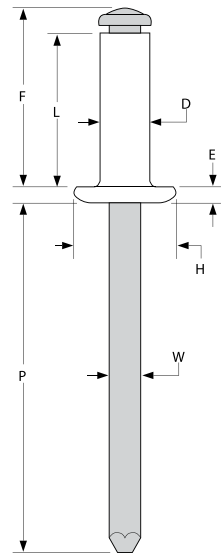
Diam.	(No.)	Hole Size	Drill	D nom	H nom	E ref	W nom	P min
3/32	(3)	.097-.100	#41	.094	.188	.032	.057	1.00
1/8	(4)	.129-.133	#30	.125	.250	.404	.076	1.00
5/32	(5)	.160-.164	#20	.156	.312	.050	.095	1.00
3/16	(6)	.192-.196	#11	.187	.375	.060	.114	1.00
1/4	(8)	.257-.261	F	.250	.500	.080	.151	1.00

SureSet™ Large Head Flange

Diam.	(No.)	Hole Size	Drill	D nom	H nom	E ref	W nom	P min
1/8	(4)	.129-.133	#30	.125	.375	.065	.076	1.00
5/32	(5)	.160-.164	#20	.156	.156	.468	.095	1.00
3/16	(6)	.192-.196	#11	.187	.625	.092	.114	1.00
1/4	(8)	.257-.261	F	.250	.750	.107	.151	1.00

SureSet™ 120° Flush Head

Diam.	(No.)	Hole Size	Drill	D nom	H nom	E ref	W nom	P min
1/8	(4)	.129-.133	#30	.125	.220	.045	.076	1.00
5/32	(5)	.160-.164	#20	.156	.281	.058	.095	1.00
3/16	(6)	.192-.196	#11	.187	.348	.073	.114	1.00



Blind Rivet Grip Data

Diam	Grip #	Range	L max	F max
3/32	32	.020-.125	.250	.350
	34	.126-.250	.375	.475
	36	.251-.375	.212	.332
1/8	41	.020-.062	.212	.332
	42	.063-.125	.275	.395
	43	.126-.187	.337	.457
	44	.188-.250	.400	.520
	45	.251-.312	.462	.582
	46	.313-.375	.525	.645
	48	.376-.500	.650	.770
5/32	410	.501-.625	.775	.895
	52	.020-.125	.300	.440
	53	.126-.187	.362	.502
	54	.188-.250	.425	.565
	56	.251-.375	.550	.690
	58	.376-.500	.675	.815
3/16	510	.501-.625	.800	.940
	62	.020-.125	.325	.485
	63	.126-.187	.387	.547
	64	.188-.250	.450	.610
	66	.251-.375	.575	.735
	68	.376-.500	.700	.860
	610	.501-.625	.825	.985
	612	.626-.750	.950	1.110
	614	.751-.875	1.075	1.235
	616	.876-1.000	1.200	1.360
1/4	618	1.001-1.125	1.325	1.485
	82	.020-.125	.375	.555
	84	.126-.250	.500	.680
	86	.251-.375	.625	.805
	88	.376-.500	.750	.930
	810	.501-.625	.875	1.055
	812	.626-.750	1.000	1.180
	814	.751-.875	1.125	1.305
	816	.876-1.000	1.250	1.430
	818	1.001-1.125	1.375	1.555
820	1.126-1.250	1.500	1.680	

Installed Values in Nominal Grip (lbs)

Domed Head, Large Flange and 120° Flush Head

Diam.	Body Material	C Steel Plated	Aluminum	Aluminum	Stainless Steel	Stainless Steel
	Mandrel Material	Carbon Steel	Carbon Steel	Aluminum	Stainless Steel	Carbon Steel
3/32	Shear	150	110	80	230	230
	Tensile	210	170	115	320	320
1/8	Shear	285	200	150	500	500
	Tensile	420	300	230	650	650
5/32	Shear	420	320	220	800	800
	Tensile	565	450	340	900	900
3/16	Shear	600	435	310	995	995
	Tensile	850	725	485	1350	1350
1/4	Shear	1200	850	580	1700	1700
	Tensile	1475	1150	770	2200	2200

Sureset™ rivets feature extended grip ranges to meet a variety of fastening applications. They provide a permanent, vibration-resistant clamp and are widely used in automotive, HVAC, light construction and electronic cabinetry.

Not all items are represented in this book. Call your Duncan Bolt sales office for complete stock status.



Duncan Bolt is an Authorized Distributor of Gesipa® Rivets

Bulb-Tite Rivets

GESIPA's Bulb-tites are the original high-strength structural tri-folding blind rivets. The comprehensive Bulb-tite product line offers a broad range of diameters, head styles and material choices.

Aluminum Rivet/ Aluminum Mandrel

Head Style	Rivet Diameter	Gesipa Part #	Grip Range (inches)	Hole Size Drill #	Typical Shear	Typical Tensile
Countersunk Head Recessed Crown	3/16	RV6601-6-4	.106 - .250	.209 - .221 #4	675	450
		RV6601-6-6	.187 - .375			
		RV6601-6-8	.312 - .500			
		RV6601-6-10	.437 - .625			
		RV6601-6-12	.563 - .750			
	1/4	RV6601-8-4	.150 - .250	.250 - .263 E	1100	675
		RV6601-8-5	.187 - .375			
		RV6601-8-8	.250 - .500			
Low Profile Flat Head	5/32	RV6602-5-4	.125 - .250	.162-.167 #20	350	225
		RV6602-5-6	.187 - .375			
		RV6602-5-8	.250 - .500			
	3/16	RV6602-6-4	.125 - .250	.209 - .221 #4	675	450
		RV6602-6-6	.187 - .375			
		RV6602-6-8	.250 - .500			
		RV6602-6-10	.375 - .625			
		RV6602-6-12	.500 - .750			
	1/4	RV6602-8-4	.125 - .250	.250 - .263 1/4	1100	675
		RV6602-8-6	.187 - .375			
		RV6602-8-8	.250 - .050			
		RV6602-8-10	.375 - .625			
Dome Head Protruding Crown	5/32	RV6604-5-4	.067 - .250	.162 - .167 #20	350	225
		RV6604-5-8	.250 - .500			
	3/16	RV6604-6-3	.050 - .187	.209 - .221 #4	675	450
		RV6604-6-4	.062 - .250			
		RV6604-6-6	.187 - .375			
		RV6604-6-8	.312 - .050			
		RV6604-6-10	.437 - .625			
		RV6604-6-12	.563 - .750			
	1/4	RV6604-8-4	.062 - .250	.250 - .263 1/4 Max.	1100	675
		RV6604-8-6	.125 - .375			
		RV6604-8-8	.250 - .050			
		RV6604-8-10	.375 - .625			
	9/32	RV6603-9-3	.032 - .187 .032 - .375 .250 - .625 .375 - .750	.304 - .3125 5/16	1500	1100
	Large Flange Protruding Crown	9/32	RV6605-9-6 RV6605-9-10 RV6605-9-12	.042 - .375 .250 - .625 .375 - .750	.308 - .327 5/16	1500
Low Profile Head Recessed Crown	3/16	RV6606-6-3	.050 - .187	.209 - .221 #4	675	450
		RV6606-6-4	.062 - .250			
		RV6606-6-6	.187 - .375			
		RV6606-6-8	.312 - .500			
		RV6606-6-10	.437 - .750			
1/4	RV6606-8-4	.040 - .250	.250 - .263 1/4	950	575	
	RV6606-8-6	.125 - .375				
	RV6606-8-8	.250 - .500				
	RV6606-8-10	.375 - .625				



Steel Rivet/Steel Mandrel

Head Style	Rivet Diameter	Gesipa Part #	Grip Range (inches)	Hole Size Drill #	Typical Shear	Typical Tensile
Countersunk Head Recessed Crown	1/4	RV6671-8-4	.150 - .250	.250 - .263 1/4	1250	950
		RV6671-8-6	.187 - .375			
		RV6671-8-8	.250 - .050			
Dome Head Recessed Crown	1/4	RV6676-8-4	.040 - .250	.250 - .263 1/4	1250	950
		RV6676-8-6	.125 - .375			
		RV6676-8-8	.250 - .050			
		RV6676-8-10	.375 - .625			



Monel Rivet/Stainless Steel Mandrel

Head Style	Rivet Diameter	Gesipa Part #	Grip Range (inches)	Hole Size Drill #	Typical Shear	Typical Tensile
Dome Head Recessed Crown	1/4	RV6696-8-4	.040 - .250	.250 - .263 1/4	2100	1455
		RV6696-8-6	.125 - .375			
		RV6696-8-8	.250 - .050			
		RV6696-8-10	.375 - .625			

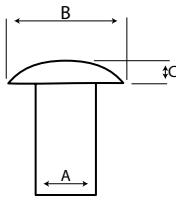
Not all items are represented in this book. Call your Duncan Bolt sales office for complete stock status.

Solid Aluminum Rivets

Standard commercial tolerances apply to dimensional specs.

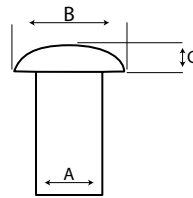
Standard Brazier Head

A	B	C
1/8	.312	.062
5/32	.390	.078
3/16	.467	.094
1/4	.625	.125
5/16	.780	.156
3/8	.937	.187



Standard Universal Head

A	B	C
1/8	.250	.059
5/32	.312	.072
3/16	.375	.085
1/4	.500	.112
5/16	.625	.138
3/8	.750	.166

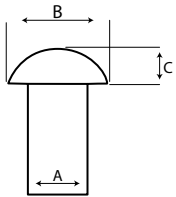


Alloys available:

- » 1100F Soft
- » 2117T4 Hard
- » 6061T6
- » 6053T4
- » 6053T61
- » 5056H32

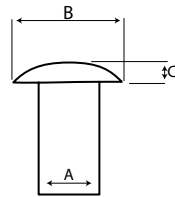
Standard Round Head

A	B	C
1/8	.250	.094
5/32	.312	.117
3/16	.375	.140
1/4	.500	.187
5/16	.625	.234
3/8	.750	.281



Modified Brazier Head

A	B	C
1/8	.235	.047
5/32	.312	.063
3/16	.390	.078
1/4	.468	.094
5/16	.625	.125
3/8	.781	.156



Other Rivets & Accessories

Nylon Drive Rivets

Use to attach wall liners, scuff rail & plywood.

Nylon Body, Metal Pin- Truss Head

- » 1/4 x 3/4
- » 1/4 x 1
- » 1/4 x 1 1/2
- » 1/4 x 2



Unitap Style

- » 1/4 x 1
- » 1/4 x 1 1/2
- » 1/4 x 2



Air Hammers & Accessories

- » .401 and .498 Shank Air Hammers
- » Punches
- » Chisels
- » Cutters
- » Springs



Roll-Up Door Rivets

- » 1/4 x 1
- » 1/4 x 1 1/8
- » 1/4 x 1 1/4



Solid Rivet Sets

Aircraft Quality, Made in the USA

.401 Shank Rivet Sets for 3/16 and 1/4 Rivets

.498 Shank Rivet Sets for 5/16 and 3/8 Rivets

- » Standard Brazier Head
- » Modified Brazier Head
- » Universal Head
- » Round Brazier Head



Not all items are represented in this book. Call your Duncan Bolt sales office for complete stock status.