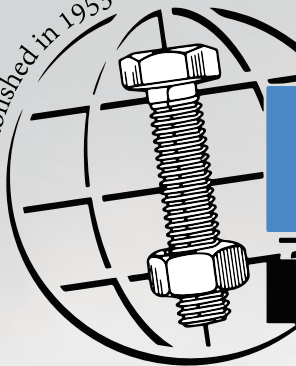


Established in 1953



DUNCAN BOLT

One Stop Fastener Source for More Than 60 Years

Construction - Industrial - Trucking - Manufacturing - Waterworks
OEM - MRO - Power & Energy - Solar - Mining

Truck and Trailer Fasteners and Accessories

ABRASIVES

AIR BRAKE FITTINGS

BATTERY LUGS

BOLTS, NUTS, SCREWS

CABLE CLAMPS & TIES

DRILL BITS

DRIVE BITS

ELECTRICAL TERMINALS

HOSE CLAMPS

NUTS

RIVETS

SPLIT-LOOM

THREAD REPAIR

TOOLING

WIRE



www.duncanbolt.com

1-800-798-1939

Santa Fe Springs - Anaheim - Phoenix - Queretaro - Shanghai

Table of Contents

Duncan Bolt Company is pleased to offer our newest version of our Truck & Trailer Parts Catalog. In it you will find updated information on the products most used in the truck & trailer repair industry. Keep in mind, the parts listed are just a sampling of what we have available.

If you don't see what you need, give us a call and we'll do what we can to get it.

For more information about all the products and services we provide, please visit our website at www.duncanbolt.com

HuckBolts® for Truck Cabs

Magna-Grip®	4
Magna-Grip® Collars	4

HuckBolts® for Truck Trailers

C6L®	5
C6L® Collars	5
Magna-Lok®	7
C98LT	7
Hucktainer®	8

HuckBolts® for Truck Frames

HP8® Powerbolt™	9
HP8® Fastening Kits	9
Huck 360®- Inch and Metric Bolts & Nuts	9

The Huck BobTail® System

BobTail® HuckBolts®	10
---------------------	----

Huck® Tooling

Pneudraulic Cab Tooling	11
Truck Frame Tooling	11
Huck 940 Powerig®	11
Tool Repairs and Rentals	11

AVK® Inserts

AVK A-L Series™ Knurled Threaded Insert	12
AVK R-N Series® Rivetnut Threaded Insert	12

AVK® Hand Operated Installation Tools

AA112 Hi-Torquer™	13
AA170 Plier Tool	13
AA184 Expendable Tools	13
AA480N Double Action Lever Tool	13
AA510N Plunger-Double Action Lever Tool	13
AVK Authorized Repair Station	13

AVK Pneumatic Tooling

AVK Portable Battery Power Tool	13
AVK ARO Brand Pneumatic Tool	13

Blind Rivets

Grip-Rite SureSet™ Rivets	14
SureSet™ Domed Head	14
SureSet™ Large Head Flange	14
SureSet™ 120° Flush Head	14
Bulb-Tite Rivets	15

Solid Aluminum Rivets

Standard Brazier Head	16
Standard Universal Head	16
Standard Round Head	16
Modified Brazier Head	16

Other Rivets & Accessories

Nylon Drive Rivets	16
Roll-Up Door Rivets	16
Solid Rivet Sets	16
Air Hammers & Accessories	16
Solid Rivet Sets	16

Recoil® Thread Repair Kits

UNC Thread Sizes	17
UNF Thread Sizes	17
NPT Thread Sizes	17

Copper Battery Lugs

1/4" Stud (.250)	17
5/16" Stud (.3125)	17
3/8" Stud (.375)	17
1/2" Stud (.500)	17



Not all items are represented in this book. Call your Duncan Bolt sales office for complete stock status.

Table of Contents

Bolts, Nuts, Screws

Frame Bolts, Flanged, Grade 8 Alloy Steel, Coarse	18
Flanged Stover Lock Nuts, Coarse Thread	18
Frame Bolts, Flanged, Grade 8 Alloy Steel, Fine	19
Flanged Stover Lock Nut, Fine Thread	19
Bottom Rail Bolts	19
Bottom Crossmember Bolt Kit	19
Floor Board Screws	19

Wire, Clamps, Cable Ties

Primary Wire	20
Nylon Cable Clamps	20
Butt Connectors	20
Split Loom- UV Black	20
Cable Ties	21
Hose Clamps	21
Mini Series Clamps	21

Electrical Terminals

Spades	22
Female Disconnects	22
Male Disconnects	22
Rings	22
Hooks	22

Air Brake Fittings for Nylon Tubing

Male Connector	23
Male Elbow	23
Sleeve	23
Nut	23
Union	23
Tee Pipe on Run	23
Tee Pipe on Branch	23

Air Brake Fittings- Push to Connect

Male Connector	23
Swivel Male Branch Tee	23
Swivel Male Elbow	23
Union	23

Vega® Drive Bits

Hex Insert Bits	24
Slotted Insert Bits	24
Square Insert Bits	24
Torx Bits	24
Phillips Insert Bits	24

Pearl® Abrasives

Depressed Center Grinding Wheels	24
Bench Grinding Wheels	24
Cut-Off Wheels	24
Surface Preparation Flap Wheels	24
Fiber Discs- Coated Abrasives	24
Resin Cloth Belts	24
Shop Rolls	24
Sandpaper Sheets	24

Champion® Drill Bits

Jobber Drills - XL5	25
Black Gold® Jobber Drills - XGO	25
General Purpose Jobber Drills - USHD	25
Silver & Deming Drills - 712	25
Maintenance Reamers - SA80	25
Screw Machine Drills - 1705	25
6" Aircraft Extension Drills - 7006	25
12" Aircraft Extension Drills - 7012	25

More Products and Services

Also Available at Duncan Bolt	26
Trusted Suppliers	26
Custom Kitting & Packaging	26
Custom Manufacturing	27
Delivery Options	27

Contact Us

Duncan Bolt, Corporate	27
Duncan Bolt, Shanghai	27
Duncan Bolt, Phoenix	27
Duncan Bolt, Mexico	27
Duncan Solar	27
Visit our Website	27
About Duncan Bolt	28

All information printed in this catalog was believed to be accurate at the time of printing. Duncan Bolt Company makes no warranties as to the accuracy of this information. Any information used for any purpose by anyone is at the sole risk of that person. Duncan Bolt is not responsible for any claim, loss, or damage arising from therefrom.

The information in this catalog is subject to change without advanced notice.

Not all items are represented in this book. Call your Duncan Bolt sales office for complete stock status.

Duncan Bolt is an Authorized Distributor of Huck® Fasteners.

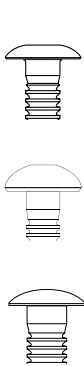
HuckBolts® for Truck Cabs

HuckBolts contribute to the overall strength, durability and performance of the vehicle throughout its lifetime. Trucks and chassis both benefit, ultimately demonstrating reduced warranty claims, and providing maintenance-free performance. Magna-Grip®, Magna-Lok® and C98LT are quality Huck parts and are in stock at Duncan Bolt.

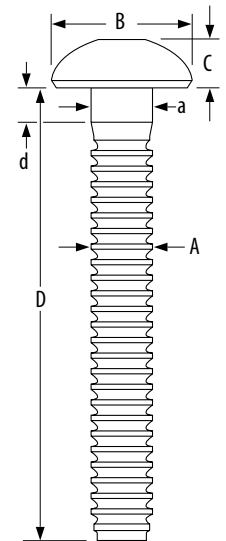


Magna-Grip®

Vibration-resistant, reliable grade 2 fasteners offering high uniform installed values with a wide grip range. A unique, lock-groove design ensures a secure installation.



Button Head (Brazier Head)				Max. Hole Size	A ref	B	C	D	a max	d ref
Size	Steel Part #	Aluminum #	Grip Range							
1/4 (8)	MGPB-R8-10G	MGPB-E8-10	.062 - .625	.281	.248	.480-.520	.109-.129	1.945-2.085	.259	.125
	MGPB-R8-20G	MGPB-E8-20	.625 - 1.25					2.580-2.680		.312
98T Rivet Head				Max. Hole Size	A ref	B	C	D	a max	d ref
Size	Steel Part #	Aluminum #	Grip Range							
3/16 (6)	MGP98T-R6-10G	MGP98T-E6-10	.062 - .625	.219	.186	.448-.488	.088-.108	1.778-1.828	.196	-
	MGP98T-R6-20G	MGP98T-E6-20	.625 - 1.250					2.360-2.410		.312
Truss Head				Max. Hole Size	A ref	B	C	D	a max	d ref
Size	Steel Part #	Aluminum #	Grip Range							
1/4 (8)	MGPT-R8-10G	MGPT-E8-10	.062 - .625	.281	.248	.542-.582	.100-.120	1.955-2.055	.259	.125
	MGPT-R8-20G	MGPT-E8-20	.625 - 1.250					2.550-2.650		.312



Installed Values in Nominal Grip (lbs.)

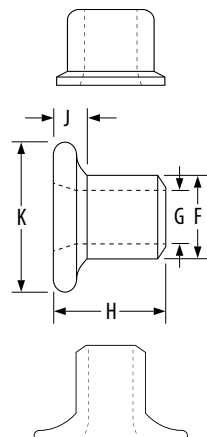
Diameter		Aluminum		Steel	
		Minimum	Typical	Minimum	Typical
3/16 (6)	Shear	750	1000	1725	2000
	Tensile	900	1300	1650	2700
	Clamp	550	800	1025	1500
1/4 (8)	Shear	1200	1600	2200	2700
	Tensile	1620	2500	2950	4000
	Clamp	950	1400	1350	2000

Magna-Grip® Benefits

- » Unmatched installation speed
- » Low overall installation cost
- » Vibration resistance
- » Flush-breaking pin
- » Quiet non-torque tools
- » No repetitive stress injuries
- » Eliminates need for secondary operations
- » No special training or skills required for operators



With Magna-Grip fasteners, quality installations do not depend upon the skill of the worker or a correctly calibrated tool. They install in seconds (up to 1,200 per hour) and require no more than a glance to confirm a correct installation: *If the core pin is flush with the collar, the Magna-Grip fastener is properly installed!*



Magna-Grip® Collars

Standard Flange			(S)= Steel (A)= Aluminum				
Size	Steel #	Aluminum #	F	G	H	J ref	K
3/16	MGC-R6U	MGC-F6	.305-.315	(S) .187-.197	.267-.283	.050	.360-.390
				(A) .194-.204			
1/4	MGC-R8U	MGC-F8	.395-.405	.250-.260	.367-.383	.062	.485-.515
Medium Flange (Peterbilt)							
3/16	MGCS-R6U	--	.305-.315	(S) .187-.197	.294-.303	.100	.490-.540
				(A) .194-.204			
Wide Flange							
3/16	MGCW-R6U	--	.305-.315	(S) .187-.197	.290-.320	.100	.635-.760
				(A) .194-.204			
1/4	MGCW-R8U	--	.395-.405	.250-.260	.427-.467	.130	.850-1.10



Not all items are represented in this book. Call your Duncan Bolt sales office for complete stock status.

Duncan Bolt is an Authorized Distributor of Huck® Fasteners.

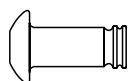
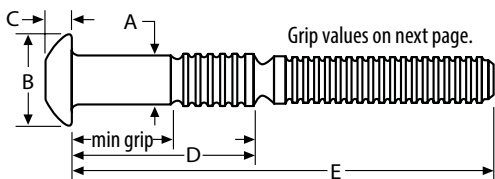
HuckBolts® for Truck Trailers

The structural strength of any trailer is dependent upon how strong the fasteners are themselves. HuckBolts provide the joint strength and overall durability to a variety of common trailer assembly applications. No matter the industry, Huck provides fasteners that are built to last.

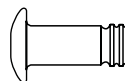


C6L®

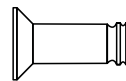
The classic 6-groove locking fastener is ideal for a wide range of applications that require a strong, vibration-resistant seal.



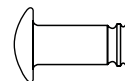
Round Head (C6LB)



Truss Head (C6LT)



Flush Head (C6L90)

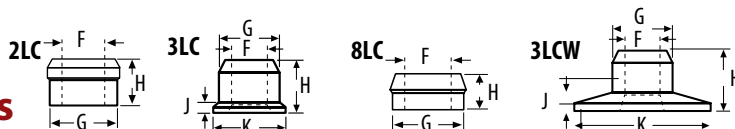


Rivet Head (C98LT)

Dimensions	Round Head			Truss Head		Flush Head		Rivet Head	
Diameter	A	B	C	B	C	B	C	B	C
3/16 (6)	.190 - .195	.360 - .390	.113 - .125	.406 - .469	.078 - .088	--	--	.469	.094
1/4 (8)	.254 - .259	.475 - .525	.136 - .152	.531 - .594	.103 - .115	.437 - .473	.104 - .113	--	--
5/16 (10)	.317 - .322	.594 - .656	.181 - .201	.703 - .797	.127 - .141	--	--	--	--
3/8 (12)	.380 - .385	.713 - .787	.223 - .248	.828 - .922	.186 - .202	--	--	--	--

C6L's exclusive locking groove design ensures a permanent fit that resists loosening. That means it's ideal for applications from general manufacturing to such high-vibration applications as HVAC, trailer and container assembly, rotary and rotating equipment, shopping carts, railroad and transit cars, geodesic structures, and many others.

C6L® Collars



Collar Type	Diameter	F	G	H	J (1,2)	K
Standard (2LC)	3/16 (6)	.187 - .196	.304 - .311	.220 - .260	--	--
	1/4 (8)	.256 - .265	.402 - .409	.290 - .320	--	--
	5/16 (10)	.304 - .310	.485 - .494	.350 - .380	--	--
	3/8 (12)	.375 - .385	.590 - .600	.430 - .460	--	--
Flange (3LC)	3/16 (6)	.187 - .196	.304 - .311	.250 - .280	.031 - .062	.359 - .391
	1/4 (8)	.256 - .267	.402 - .409	.349 - .379	.047 - .078	.484 - .516
	5/16 (10)	.304 - .312	.498 - .507	.394 - .426	.062 - .094	.609 - .641
	3/8 (12)	.378 - .390	.599 - .610	.502 - .532	.062 - .125	.719 - .781
Low Profile (8LC)	3/16 (6)	.187 - .196	.304 - .311	.132 - .162	.064	--
	1/4 (8)	.256 - .265	.402 - .409	.172 - .202	.125	--
	3/8 (12)	.375 - .385	.590 - .600	.303 - .373	.156	----
Wide Flange (3LCW)	1/4 (8)	.253 - .272	.400 - .409	.410 - .480	.105 - .156	.853 - 1.022
	5/16 (10)	.304 - .312	.498 - .507	.474 - .506	.144 - .196	.984 - 1.016

(1) When using 3LC collars, add "J" dimension to thickness of material being fastened to determine grip number.

(2) When using 8LC collars, subtract "J" dimension from thickness of material being fastened to determine grip number.



Installed Fastener Values

Minimum installed values in pounds.

Diameter	Carbon Steel Pins			2024 Aluminum Pins			6061 Aluminum Pins			Stainless Steel Pins		
	2LC-R or 3LC-R Collars			2LC-F or 3LC-F Collars			LC-1 or 3LC-1 Collars			2LC-2CU or 3LC-2CU Collars		
	Shear	Clamp	Tensile	Shear	Clamp	Tensile	Shear	Clamp	Tensile	Shear	Clamp	Tensile
3/16 (6)	1725	1025	1650	1050	550	1000	775	350	530	2000	1025	1455
1/4 (8)	3050	1805	3000	1875	950	1800	1375	620	975	3550	1805	2750
5/16 (10)	4725	2810	4600	2925	1500	2850	2125	965	1550	5525	2810	4250
3/8 (12)	6825	4020	6500	4200	2200	4200	3050	1380	2400	7950	4020	6100

Not all items are represented in this book. Call your Duncan Bolt sales office for complete stock status.



Duncan Bolt is an Authorized Distributor of Huck® Fasteners.

C6L® Grip Table- 3/16 & 1/4

Part numbers below reflect Round Head, Carbon Steel, Zinc Plated bolts. See dimension diagram on previous page for E and F measurements.

Grip	Grip Range	3/16 (6)			1/4 (8)		
		Part#	E	F	Part#	E	F
2	0.063 - 0.188	C6LB-R6-2G	0.394	1.404	C6LB-R8-2G	0.485	1.520
3	0.125 - 0.250	C6LB-R6-3G	0.457	1.466	C6LB-R8-3G	0.548	1.583
4	0.188 - 0.313	C6LB-R6-4G	0.519	1.529	C6LB-R8-4G	0.610	1.645
5	0.250 - 0.375	C6LB-R6-5G	0.582	1.591	C6LB-R8-5G	0.673	1.708
6	0.313 - 0.438	C6LB-R6-6G	0.644	1.654	C6LB-R8-6G	0.735	1.770
7	0.375 - 0.500	C6LB-R6-7G	0.707	1.716	C6LB-R8-7G	0.798	1.833
8	0.438 - 0.563	C6LB-R6-8G	0.769	1.779	C6LB-R8-8G	0.860	1.895
9	0.500 - 0.625	C6LB-R6-9G	0.832	1.841	C6LB-R8-9G	0.923	1.958
10	0.563 - 0.688	C6LB-R6-10G	0.894	1.904	C6LB-R8-10G	0.985	2.02
11	0.625 - 0.750	C6LB-R6-11G	0.957	1.966	C6LB-R8-11G	1.048	2.083
12	0.688 - 0.813	C6LB-R6-12G	1.019	2.029	C6LB-R8-12G	1.110	2.145
13	0.750 - 0.875	C6LB-R6-13G	1.082	2.091	C6LB-R8-13G	1.173	2.208
14	0.813 - 0.938	C6LB-R6-14G	1.144	2.154	C6LB-R8-14G	1.235	2.270
15	0.875 - 1.000	C6LB-R6-15G	1.207	2.216	C6LB-R8-15G	1.298	2.333
16	0.938 - 1.063	C6LB-R6-16G	1.269	2.279	C6LB-R8-16G	1.360	2.395
14	1.000 - 1.125	C6LB-R6-17G	1.332	2.341	C6LB-R8-17G	1.423	2.458
18	1.063 - 1.188	C6LB-R6-18G	1.394	2.404	C6LB-R8-18G	1.458	2.520
19	1.125 - 1.250	C6LB-R6-19G	1.457	2.466	C6LB-R8-19G	1.548	2.583
20	1.188 - 1.313	C6LB-R6-20G	1.519	2.529	C6LB-R8-20G	1.610	2.645
21	1.250 - 1.375	C6LB-R6-21G	1.582	2.591	C6LB-R8-21G	1.673	2.708
22	1.313 - 1.438	C6LB-R6-22G	1.644	2.654	C6LB-R8-22G	1.735	2.770
23	1.375 - 1.500	C6LB-R6-23G	1.707	2.716	C6LB-R8-23G	1.798	2.833
24	1.438 - 1.563	--	--	--	C6LB-R8-24G	1.866	2.895
25	1.500 - 1.625	--	--	--	C6LB-R8-25G	1.923	2.958
26	1.563 - 1.688	--	--	--	C6LB-R8-26G	1.985	3.020
27	1.625 - 1.750	--	--	--	C6LB-R8-27G	2.048	3.083
28	1.688 - 1.813	--	--	--	C6LB-R8-28G	2.110	3.145
29	1.750 - 1.875	--	--	--	C6LB-R8-29G	2.173	3.208
30	1.813 - 1.938	--	--	--	C6LB-R8-30G	2.235	3.270
31	1.875 - 2.000	--	--	--	C6LB-R8-31G	2.298	3.333
32	1.938 - 2.063	--	--	--	C6LB-R8-32G	2.368	3.395
37	--	--	--	--	C6LB-R8-37G	2.637	3.708



Build a C6L Huckbolt® part #

C6L (Style)- (Material) (Diameter)- (Grip #) (Finish)

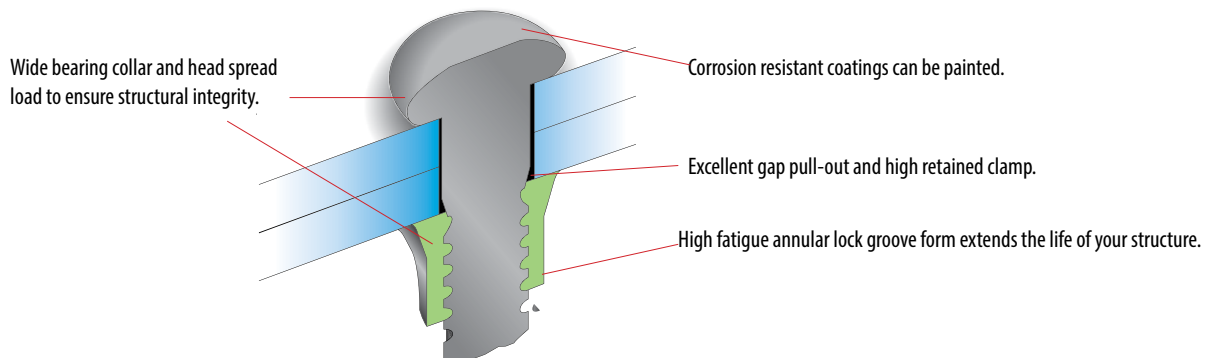
Style	Material	Diameter	Finish
Round Head C6LB	Carbon Steel	R 3/16 6	Zinc G
Truss Head C6LT	2024 Alum Alloy	C 1/4 8	
Flush Head C6L90	6061 Alum Alloy	F 5/16 10	
Rivet Head C98LT	Stainless Steel	U 3/8 12	

- » "Grip" is actual thickness of material to be fastened.
- » C6L90 is not available in grip 2 for 3/16 and 1/4 diameters.
- » C6L90 is not available in grip 4 for 3/8 diameter.

C6L® Grip Table- 5/16 & 3/8

Part numbers below reflect Round Head, Carbon Steel, Zinc Plated bolts. See dimension diagram on previous page for E and F measurements.

Grip	Grip Range	5/16 (10)			3/8 (12)		
		Part#	E	F	Part#	E	F
4	0.125 - 0.375	CL6B-R10-4G	0.749	1.906	CL6B-R12-4G	0.809	2.125
6	0.250 - 0.500	CL6B-R10-6G	0.874	2.031	CL6B-R12-6G	0.934	2.250
8	0.375 - 0.625	CL6B-R10-8G	1.000	2.156	CL6B-R12-8G	1.059	2.375
10	0.500 - 0.750	CL6B-R10-10G	2.281	2.281	CL6B-R12-10G	1.184	2.500
12	0.625 - 0.875	CL6B-R10-12G	2.406	2.406	CL6B-R12-12G	1.309	2.625
14	0.750 - 1.000	CL6B-R10-14G	2.531	2.531	CL6B-R12-14G	1.434	2.750
16	0.875 - 1.125	CL6B-R10-16G	2.656	2.656	CL6B-R12-16G	1.559	2.875
18	1.000 - 1.250	CL6B-R10-18G	2.781	2.781	CL6B-R12-18G	1.684	3.000
20	1.125 - 1.375	CL6B-R10-20G	2.906	2.906	CL6B-R12-20G	1.809	3.125
22	1.250 - 1.500	CL6B-R10-22G	3.031	3.031	CL6B-R12-22G	1.934	3.250
24	1.375 - 1.625	CL6B-R10-24G	3.156	3.156	CL6B-R12-24G	2.059	3.375
26	1.500 - 1.750	CL6B-R10-26G	3.281	3.281	CL6B-R12-26G	2.184	3.500
28	1.625 - 1.875	CL6B-R10-28G	3.406	3.406	CL6B-R12-28G	2.309	3.625
30	1.750 - 2.000	CL6B-R10-30G	3.531	3.531	CL6B-R12-30G	2.434	3.750
32	1.875 - 2.125	CL6B-R10-32G	3.656	3.656	CL6B-R10-32G	2.559	3.875



Not all items are represented in this book. Call your Duncan Bolt sales office for complete stock status.

Duncan Bolt is an Authorized Distributor of Huck® Fasteners.

Magna-Lok®

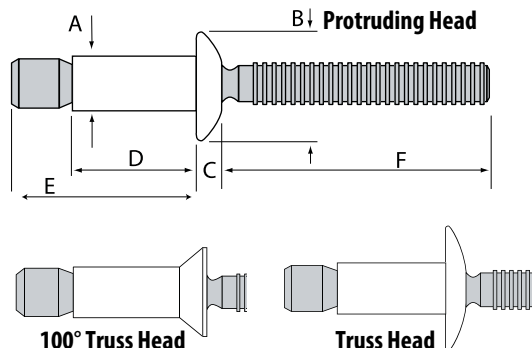
Hole filling fastener with excellent gap pull-out and moisture resistance. Solid circle lock creates internal lock that virtually eliminates pin push-out.



Protruding Head						Dimensions are same unless noted by (R, B or U).					
Size	Steel (R)	Aluminum (B)	Stainless (U)	Grip Range	Hole Size	A Nom	B Max	C Max	D Max	E Max	F Min
3/16 (6)	MGLP-R6-4	MGLP-B6-4	MGLP-U6-4	.062 - .270	.191 - .201	.187	.385 .392(U)	.085 .101 (U)	.415	.733 / .728 (U)	.980 / .969 (U)
	MGLP-R6-7	MGLP-B6-7	MGLP-U6-7	.214 - .437					.582	.892 / .889 (U)	.968 / .955 (U)
	MGLP-R6-E	MGLP-B6-E	MGLP-U6-E	.062 - .437					.582	1.031 / 1.026 (U)	.991 / .98 (U)
1/4 (8)	MGLP-R8-6	MGLP-B8-6	MGLP-U8-6	.080 - .375	.261 - .272	.253	.530	.120	.560	.984	1.043 1.046 (B)
	MGLP-R8-10	MGLP-B8-10	MGLP-U8-10	.350 - .625					.810	1.234	
	MGLP-R8-E	MGLP-B8-E	MGLP-U8-E	.080 - .272					.810	1.419 / 1.415 (B)	
3/8 (12)	MGLP-R12-12	MGLP-B12-12	MGLP-U12-12	.120 - .625	.392 - .408	.386	.793	.175	.845	1.476	1.545
Truss Head											
3/16 (6)	MGLT-R6-4	MGLT-B6-4	MGLT-U6-4	.062 - .270	.191 - .201	.187	.530	.095 / .104 (U)	.415	.733	.973 / .964 (U)
	MGLT-R6-E	MGLT-B6-E	--	.062 - .437				.095	.582	1.031	.984
1/4 (8)	MGLT-R8-6	MGLT-B8-6	--	.080 - .375	.261 - .272	.253	.592	.120	.560	.984	1.043 1.046 (B)
100° Flush Head											
3/16 (6)	MGL100-R6-6	MGL100-B6-6	MGL100-U6-6	.125 - .331	.191 - .201	.187	.350	.080	.490	.809 / .804 (U)	.984 / .992 (U)
	MGL100-R6-9	MGL100-B6-9	MGL100-U6-9	.305 - .500					.660	.968 / .965 (U)	.975 / .978 (U)
1/4 (8)	MGL100-R8-8	MGL100-B8-8	MGL100-U8-8	.160 - .475	.261 - .272	.253	.410	.090	.665	1.089 / 1.085 (U)	1.055
	MGL100-R8-12	MGL100-B8-12	MGL100-U8-12	.415 - .725					.915	1.339 / 1.335 (U)	1.058 (B) / 1.059 (U)

Installed Values in Nominal Grip (lbs.)

Material		Shear		Tensile		Pin Retention	
		Minimum	Typical	Minimum	Typical	Minimum	Typical
Steel	3/16	1300	1450	1000	1200	150	250
	1/4	2500	2750	1850	2200	300	400
	3/8	6000	6300	4000	5000	600	1000
Aluminum	3/16	600	700	500	580	75	150
	1/4	1300	1300	890	950	100	220
	3/8	2950	3000	1900	2100	250	450
Stainless Steel	3/16	1300	1400	950	1100	100	125
	1/4	2350	2500	1800	2000	200	250



For applications requiring a wide grip range, or multiple applications with similar requirements, the extended-grip Magna-Lok® is capable of spanning the range of several conventional blind rivets. This versatility can eliminate as many as six standard rivets, reducing inventory, rework, and cost.

C98LT

Fastener for decorative areas such as truck grilles. Stainless steel with polished heads. 3/16" diameter, 25/bag.

Part #	Grip Range
C98LT-U6-3BR	1/8 - 1/4
C98LT-U6-5BR	1/4 - 3/8
C98LT-U6-7BR	3/8 - 1/2
C98LT-U6-9BR	1/2 - 5/8
C98LT-U6-12BR	11/16 - 13/16

Collar part #
2LC-R6G



Not all items are represented in this book. Call your Duncan Bolt sales office for complete stock status.



Duncan Bolt is an Authorized Distributor of Huck® Fasteners.

Hucktainer®

Two-piece 3/8" specialty fastener for fiberglass reinforced plywood, metal clad panels, and other composite materials.

Grip Data - Standard			Dimensional Data- Standard			
Grip Number	Grip Range		A	B	C	D
	Min	Max				
9	.500	.625	.562	2.170	--	0.170
10	.562	.687	.624	2.232	.154	.079
11	.625	.750	.687	2.295	.217	.142
12	.687	.812	.749	2.357	.279	.204
13	.750	.875	.812	2.420	.342	.267
14	.812	.937	.874	2.482	.404	.329
15	.875	1.000	.937	2.548	.467	.392
16	.937	1.062	.999	2.607	.529	.454
17	1.000	1.125	1.062	2.670	.592	.517
18	1.062	1.187	1.124	2.732	.654	.579
19	1.125	1.250	1.187	2.795	.717	.642
20	1.187	1.312	1.249	2.857	.779	.704
21	1.250	1.375	1.312	2.920	.842	.767
22	1.312	1.437	1.374	2.982	.904	.829
23	1.375	1.500	1.437	3.045	.967	.892
24	1.437	1.562	1.499	3.107	1.029	.954
25	1.500	1.625	1.562	3.170	1.092	1.017
26	1.562	1.687	1.625	3.232	1.154	1.079
27	1.625	1.750	1.687	3.295	1.217	1.142
28	1.687	1.812	1.750	3.357	1.279	1.204
29	1.750	1.875	1.812	3.420	1.342	1.267
30	1.812	1.937	1.875	3.482	1.404	--

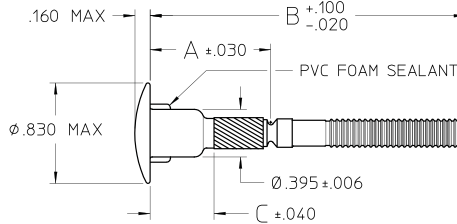
Note: Only wide bearing pin HLPE () and/or wide bearing sleeve HLPS should be used directly against FRP.

Grip Data - Short Grip			Dimensional Data - Short Grip			
Grip Number	Grip Range		A	B	C	D
	Min	Max				
7	.375	.500	.500	2.120	--	--
8	.437	.562	.562	2.182	.125	.050
9	.500	.625	.624	2.244	.187	--

Note: Only wide bearing pin HLPSC () and or wide bearing sleeve HLPSC should be used directly against FRP.
Consult for stock status; minimums may apply.

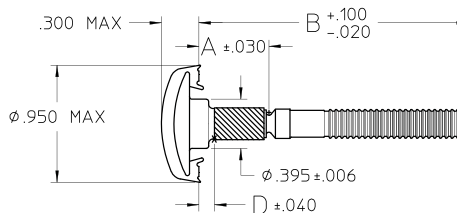
Standard Low Profile Head HLPP-R12- ()

Short Grip Standard Low Profile Head HLPSC-R12- ()



Standard Medium Bearing Encapsulated Head HLP (*)-R12- ()

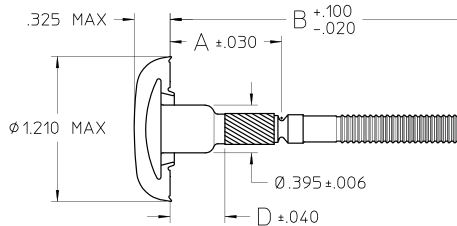
Standard Grip Medium Bearing Encapsulated Head HLPSC (*)-R12- ()



- * Encapsulated Color
- W White
- G Gray
- RY Ryder yellow
- HY Hertz Yellow

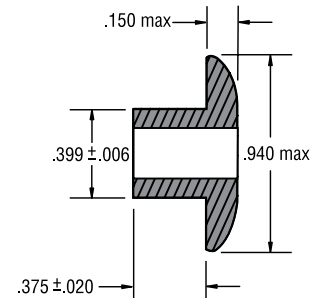
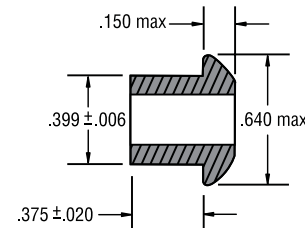
Standard Wide Bearing Encapsulated Head HLP (*)-R12- ()

Short Grip Wide Bearing Encapsulated Head HLPSC (*)-R12- ()

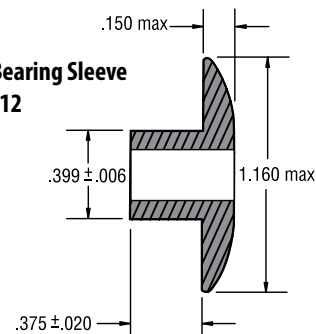


Medium Bearing Sleeve HLPSC-R12

Clearance Sleeve HLPSC-R12



Large Bearing Sleeve HLPSC-R12



Not all items are represented in this book. Call your Duncan Bolt sales office for complete stock status.

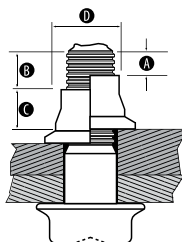
Duncan Bolt is an Authorized Distributor of Huck® Fasteners.

HuckBolts® for Truck Frames

HP8® Powerbolt™

Provides an easy-to-use system that delivers a permanent, vibration resistant clamp.

Headmark Grip #	Grip Range (inches)	Aftermarket Fastener		
		1/2" (16)	5/8" (20)	3/4" (24)
8	0.250 - 0.750	HP8F-DT16-8	HP8F-DT20-8	--
12	0.500 - 1.000	HP8F-DT16-12	HP8F-DT20-12	HP8F-DT24-12
16	0.750 - 1.250	--	--	--
20	1.000 - 1.500	HP8F-DT16-20 HP880-20-20	HP8F-DT20-20	HP8F-DT24-20
24	1.250 - 1.750	--	--	--
28	1.500 - 2.000	HP8F-DT16-28 HP880-20-28	HP8F-DT20-28	HP8F-DT24-28
32	1.750 - 2.250	HP8F-DT16-32	--	--
36	2.000 - 2.500	HP8F-DT16-36	HP8F-DT20-36	HP8F-DT24-36
44	2.500 - 3.00	--	HP8F-DT20-44	--
Collar	--	HPCF-R16U	HPCT-R20U	HPCF-R24U



HP8® Inspection Data- Round Head, Inch Series				
Diameter	A (min)	B (max)	C (min)	D (max)
DT16	.10	.65	.56	.760
DT20	.12	.67	.73	.945
DT24	.12	.67	.86	1.132

A properly installed HuckBolt® fastener will possess the dimensional characteristics tabulated. Should the "A" dimension fall below or the "B" dimension exceed the indicated value, the fastener is being used out of grip.

A "C" dimension less than the tabulated value indicates an incorrect or worn anvil on the nose assembly. A "D" dimension greater than the given values indicates an incorrect or worn anvil on the nose assembly.

HP8® Fastening Kits

For Sale and Rental

Nose Assemblies		Hoses		Tools	
Size	Part #	Size	Part #	Size	Part #
1/2"	99-5308	12'	118309-12	1/2" & 5/8" only	2624
5/8"	99-5301	26'	118309-26	1/2"-3/4"	2628
3/4"	99-5303	--	--	--	--



Huck 360®

The most advanced nut-and-bolt fastening system on the market. It resists vibration loosening, no matter how extreme the environment. It offers quick installation and removal with conventional tools, delivers superior fatigue strength, and holds tight under high spike loads.

Inch Huck 360® Grade 8 Bolts - 3/8, 7/16, 1/2, 5/8, 3/4, 7/8, 1

Up to 6 3/4" length

Material: Medium carbon alloy steel

Finish: Black oiled or Geomet

Inch Huck 360® Nuts- 3/8, 7/16, 1/2, 5/8, 3/4, 7/8, 1

ASTM F436 hardened washers recommended

Material: Low carbon steel

Finish: Zinc Electroplate with Red Dye Chromate or Geomet

Metric Huck 360® Class 10.9 Bolts- 10mm, 12mm, 14mm, 16mm, 20mm, 24mm, 36mm

Up to 300mm length

Material: Medium carbon alloy steel

Finish: Black oiled or Geomet

Metric Huck 360® Nuts- 10mm, 12mm, 14mm, 16mm, 20mm, 24mm, 36mm

ASTM F436 hardened washers recommended

Material: Low carbon steel

Finish: Zinc Electroplate with Red Dye Chromate or Geomet



Huck 360® Benefits

- » Resists vibration loosening
- » Withstands high spike loads
- » Increases equipment uptime
- » Installs 300% faster than conventional locknuts
- » Can be installed and removed with conventional tools

Not all items are represented in this book. Call your Duncan Bolt sales office for complete stock status.



Duncan Bolt is an Authorized Distributor of Huck® Fasteners.

The Huck BobTail® System

BobTail® is designed to deliver superior joining strength in even the most extreme environments. Available in a wide range of sizes and grades, BobTail also offers quick and easy installation, and up to 10 times the fatigue strength of conventional nuts and bolts.



BobTail® HuckBolts®

Unlike conventional nuts and bolts, which have gaps on the thread flanks even when tightened, the BobTail system is designed for full metal-to-metal contact around the bolt thread by the collar. An installed BobTail has no gaps and delivers a more secure connection, providing reliability even in the most sever environments.

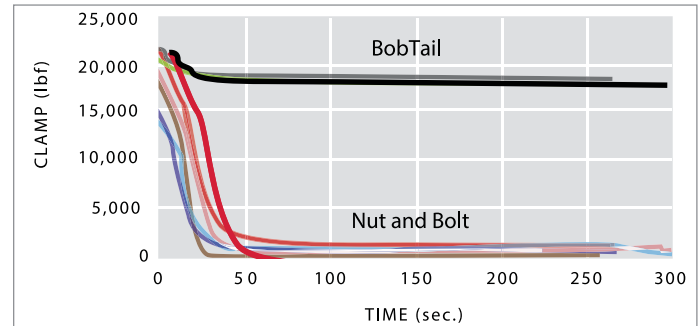


The swaged collar forms over the lock thread, and eliminates the gap.



Regular nuts and bolts have gap, which allows for loosening by vibration.

Transverse Vibration Comparison-14mm class 10.9



This chart shows nut and bolt clamp scatter is much wider compared to BobTail, and that once vibration begins, clamp load quickly decays conventional nuts and bolts, while it holds constant with the BobTail.

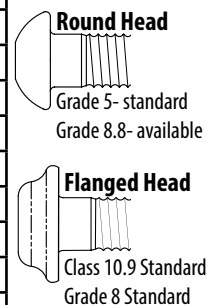
Quick Visual Inspection



The installation indicator in the collar flange (a proprietary Huck design) indicates the BobTail collar has been fully swaged on.

Standard Head Style and Strength- Large Diameter

Diameter	Round Head	Flanged Head
1/2	Grade 5	Grade 8
5/8	Grade 5	Grade 8
3/4	Grade 5	Grade 8
7/8	Grade 5	Grade 8 upon request
1	Grade 8	Grade 5
12mm	Class 8.8 upon request	Class 10.9
14mm	Class 8.8	Class 10.9, Class 8.8
16mm	Class 8.8 upon request	Class 10.9
20mm	Class 8.8 upon request	Class 10.9



More head styles available upon request.

BobTail® Benefits

- » No pintail
- » Unmatched installation speed
- » Low overall installed cost
- » Superior strength (fatigue)
- » Vibration resistance
- » Ergonomically designed installation tooling
- » Silent installation
- » No repetitive stress injuries
- » Eliminates need for secondary operations
- » No special training or skills required for installation personnel
- » Quick visual inspection is all that's needed for a quality-assured joint

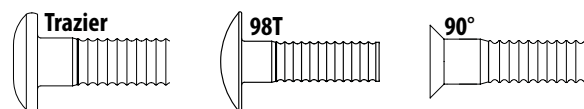


Head Style and Material Options- Small Diameter

Available Sizes: 3/16, 1/4, 5/16, 3/8

Materials: Grades 2 and 5 Carbon Steel, Aluminum, Stainless Steel

Headstyles: Trazier, 98T, 90°



Not all items are represented in this book. Call your Duncan Bolt sales office for complete stock status.

Duncan Bolt is an Authorized Distributor of Huck® Fasteners.

Huck® Tooling

Pneudraulic Cab Tooling

Fastener	Size	Nose	Tool #	Comments
C6L®	3/16	99-3003	2025	Standard Nose
	1/4	99-3006	2025	
	3/8	99-100-245	255, 256	
Magna- Grip®	3/16	99-3201	2025	Standard Nose
		99-3206	256	M.T.O Nose
	1/4	99-3204	2025	Standard Nose
		99-3207	256	
	3/8	99-1440	256	
Magna-Lok® Huck-Lok®	3/16	99-3303	202, 2025	Heavy Duty
		99-3300	202, 2025	Economy- Light Duty
	3/16 & 1/4	99-3487-68	202, 2025	Repair Only
	1/4	99-3305	202, 2025	Heavy Duty
		99-3301	202, 2025	Economy- Light Duty
	5/16	99-3307	255, 256	Standard Nose
	3/8	99-3318	255, 256	Standard Nose
Hucktainer®	3/8	99-3464	2025	Standard Nose

Truck Frame Tooling

Fastener	Size	Nose	Tool #	Comments
HP8® Huckfit	1/2	99-5308	2628, 3585	M.T.O
	5/8	99-5301	2628, 3585	Standard Nose
	3/4	99-5303	2628, 3585	Standard Nose
	12 MM	99-5401	2628, 3585	M.T.O.
	16 MM	99-5301	2628, 3585	Standard Nose
	20 MM	99-5403	2628, 3585	Repair Only
	20 MM	99-5414	2630	Standard Nose
BobTail®	1/2	99-7835	3585PT*	For removal nose add CX to p/n. Installation will require an optional pressure gauge.
	5/8	99-7831		
	3/4	99-7836		
	12 MM	99-7830		
	14 MM	99-7834		
	16 MM	99-7831		
	20 MM	99-7832		

* 3585 PT Tool comes with 16 foot hydraulic hoses attached. All other tools will require an additional hose kit which are available in 12' & 26' lengths.



Huck 940 Powerig®



The Model 940 Powerig® is a portable unit sized for moderate production and repair applications. This unit features rugged construction for durability in the field, and the choice of 115 or 220 Volt AC power. The Model 940 includes a handle for easy transport, simple adjustable hydraulic outputs and quick-connect couplers for connecting installation tool hoses.

Hydraulic Unit with 3585 tool.

Tool Repairs and Rentals

Duncan Bolt is an authorized West Coast Warranty Repair Center for Alcoa/ Huck tools. We have two factory trained repair specialists on site and offer rentals, while yours is under repair!

We also repair most Hydraulic and Pneudraulic riveters: AVK®, POP®, Avdel®, Cherry®, Gesipa®, FAR®, Lobster® and Marson®. *For more information, email: toolrepair@duncanbolt.com*



Not all items are represented in this book. Call your Duncan Bolt sales office for complete stock status.



AVK® Inserts

A blind installed threaded fastener is defined as a fastener with internal threads that can be installed into a panel, tube or other structure from the front side without need to see or access the backside, or "blind" side to complete the installation. Once installed the fastener remains captive to which a mating component can be attached using standard hardware.

AVK A-L Series™ Knurled Threaded Insert

Features a knurled body and large diameter-low profile head making it ideal for use in punched or drilled holes. Designed to be used with Grade 5 or Metric 8.8/9.8 screws.

Thread Size (Call Out)	Grip	
	Range	Call Out
6-32 (632)	.020 - .080	80
	.080 - .130	130
8-32 (832)	.020 - .080	80
	.080 - .130	130
10-24 (1024)	.020 - .130	130
	.130 - .225	225
1032 (1032)	.020 - .130	130
	.130 - .225	225
1/4-20 (420)	.027 - .165	165
	.165 - .260	260
5/16-18 (518)	.027 - .150	150
	.150 - .312	312
3/8 (616)	.027 - .150	150
	.150 - .312	312
1/2 (813)	.063 - .200	200
	.200 - .350	350



AVK uses state of the art high-speed cold forming equipment to produce its blind installed threaded inserts and studs. All aspects of their business is controlled and certified to the exacting requirements of ISO/TS16949 and ISO 9001 International standards.

AVK R-N Series® Rivetnut Threaded Insert

Ideal for applications requiring heavy push out loads such as for the attachment of leg leveling screws to the bottom of equipment. Available in Steel (S) and Aluminum (A).

Thread Size (Call Out)	Grip		I.D. Mark
	Range	Call Out	
4-40 (440)	.010 - .060	60	blank
	.060 - .085	85	1-Rad
	.085 - .110	110	2-Rad
6-32 (632)	.010 - .075	75	blank
	.075 - .120	120	1-Rad
	.120 - .160	160	2-Rad
8-32 (832)	.010 - .075	75	blank
	.075 - .120	120	1-Rad
	.120 - .160	160	2-Rad
10-32 (1032)	.010 - .080	80	blank
	.080 - .130	130	1-Rad
	.130 - .180	180	2-Rad
1/4-10 (420)	.020 - .080	80	blank
	.080 - .140	140	1-Rad
	.140 - .200	200	2-Rad
5/16-18 (518)	.030 - .125	125	blank
	.125 - .200	200	1-Rad
	.200 - .275	275	2-Rad
3/8-16 (616)	.030 - .115	115	blank
	.115 - .200	200	1-Rad
	.200 - .285	285	2-Rad
1/2-13 (813)	.050 - .150	150	blank
	.150 - .250	250	1-Rad
	.250 - .350	250	2-Rad

Thread Size (Call Out)	Grip		I.D. Mark
	Range	Call Out	
M3 x 0,5 (350)	0,25 - 1,00	1.0	blank
	1,00 - 1,75	1.75	1-Rad
	1,75 - 2,50	2.5	2-Rad
M4 x 0,7 (470)	0,25 - 2,00	2.0	blank
	2,00 - 3,00	3.0	1-Rad
	3,00 - 4,00	4.0	2-Rad
M5 x 0,8 (580)	0,25 - 2,00	2.0	blank
	2,00 - 3,50	3.5	1-Rad
	3,50 - 5,00	5.0	2-Rad
M6 x 1,0 (610)	0,75 - 2,00	2.0	blank
	2,00 - 3,50	3.5	1-Rad
	3,50 - 5,00	5.0	2-Rad
M8 x 1,25 (8125)	1,00 - 3,00	3.0	blank
	3,00 - 5,00	5.0	1-Rad



The R-N Series Rivet Nuts are manufactured using state of the art cold forming technology, which provides very precise tolerances. The surfaces and internal threads are formed, not machined, which provides excellent quality and thread strength.

Finish	Call Out	Type	Call Out
Zinc Trivalent	3T	Open End	blank
Yellow Zinc Trivalent	4T	Closed End	B
Tin Zinc Trivalent	9T	Sealed	S
		Wedge Head	W

Part # Call-Out for AVK Rivet Nuts

Product Series - Material - Finish - Thread - Grip - Type
Example: RNS3T-420-80



Not all items are represented in this book. Call your Duncan Bolt sales office for complete stock status.

Duncan Bolt is an Authorized Distributor of AVK Fasteners

AVK® Hand Operated Installation Tools

AVK has the hand tool suitable for most any application; from expendable to double action lever tools.



AA112 Hi-Torquer™

Ideal for prototyping or making repairs with the A-T and A-W Series threaded inserts. It features a patented Quick Change thread size nose assembly.



AA170 Plier Tool

Ideal for prototyping or making repairs with the A-K, A-L, A-H, A-P, A-O, E-L and E-H series threaded inserts.



AA184 Expendable Tools

Ideal for field repairs or consumer installation of AVK's products. Thread the AVK fastener onto the tool mandrel all the way up.



AA480N Double Action Lever Tool

This tool features a visual stroke indicator and a convenient spin-off removal knob. This tool installs the full range of AVK's spinwall technology product in steel and aluminum and limited sizes of steel and aluminum rivet nuts.



AA510N Plunger-Double Action Lever Tool

A visual stroke indicator and a quick acting pull removes the plunger. Due to its larger size, it installs the full range of AVK's Spinwall Technology™ Threaded Insert Product in all materials and various steel and aluminum rivet nuts.

AVK Authorized Repair Station

Duncan Bolt is authorized to repair your AVK non-warranty tools. We can also supply a rental so your job isn't stalled.
For more information, email: toolrepair@duncanbolt.com

AVK® Pneumatic Tooling

AVK4878



AVK Portable Battery Power Tool

Portable Battery Power at your finger tips for ease of installation and ergonomic comfort!

Electronic Process Control ensures a stable and consistent installation of high-torque blind rivet nuts and blind rivet studs.

- » Easy to handle, simple adjustment.
- » High Process Security.
- » Suitable for High-Torque Steel Inserts M4 - M10/#6 - 3/8" and Studs M4 - M6/#6 - 1/4".

ARO Brand



AVK ARO Brand Pneumatic Tool

The ARO Brand Pneumatic Tool has an ergonomic design and outstanding dependability. The rocker style forward and reverse trigger is easy and comfortable to use. It features a Quick-Change thread adaption kit, which allows for easy access to the thread size component parts. AVK's Pneumatic tools provide the highest RPM for the thread size selected resulting in optimum installation speed.

Not all items are represented in this book. Call your Duncan Bolt sales office for complete stock status.

www.duncanbolt.com / 800-798-1939



Blind Rivets

Grip-Rite SureSet™ Rivets

Precision two-piece, all-metal fastener ideally suited for use in blind (one side access only) and non-blind applications. Can be used with just about any combination of materials. Available in domed, large flange and 120° flush head styles.

SureSet™ Domed Head

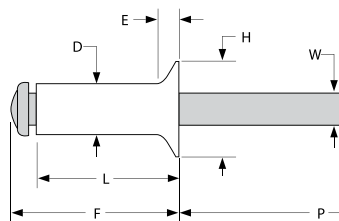
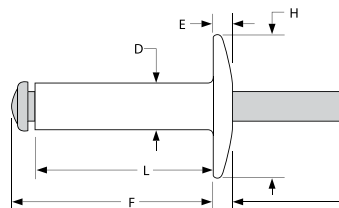
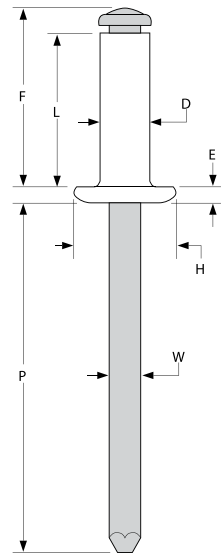
Diam.	(No.)	Hole Size	Drill	D nom	H nom	E ref	W nom	P min
3/32	(3)	.097-.100	#41	.094	.188	.032	.057	1.00
1/8	(4)	.129-.133	#30	.125	.250	.404	.076	1.00
5/32	(5)	.160-.164	#20	.156	.312	.050	.095	1.00
3/16	(6)	.192-.196	#11	.187	.375	.060	.114	1.00
1/4	(8)	.257-.261	F	.250	.500	.080	.151	1.00

SureSet™ Large Head Flange

Diam.	(No.)	Hole Size	Drill	D nom	H nom	E ref	W nom	P min
1/8	(4)	.129-.133	#30	.125	.375	.065	.076	1.00
5/32	(5)	.160-.164	#20	.156	.156	.468	.095	1.00
3/16	(6)	.192-.196	#11	.187	.625	.092	.114	1.00
1/4	(8)	.257-.261	F	.250	.750	.107	.151	1.00

SureSet™ 120° Flush Head

Diam.	(No.)	Hole Size	Drill	D nom	H nom	E ref	W nom	P min
1/8	(4)	.129-.133	#30	.125	.220	.045	.076	1.00
5/32	(5)	.160-.164	#20	.156	.281	.058	.095	1.00
3/16	(6)	.192-.196	#11	.187	.348	.073	.114	1.00



Blind Rivet Grip Data

Diam	Grip #	Range	L max	F max
3/32	32	.020-.125	.250	.350
	34	.126-.250	.375	.475
	36	.251-.375	.212	.332
1/8	41	.020-.062	.212	.332
	42	.063-.125	.275	.395
	43	.126-.187	.337	.457
	44	.188-.250	.400	.520
	45	.251-.312	.462	.582
	46	.313-.375	.525	.645
	48	.376-.500	.650	.770
5/32	410	.501-.625	.775	.895
	52	.020-.125	.300	.440
	53	.126-.187	.362	.502
	54	.188-.250	.425	.565
	56	.251-.375	.550	.690
	58	.376-.500	.675	.815
3/16	510	.501-.625	.800	.940
	62	.020-.125	.325	.485
	63	.126-.187	.387	.547
	64	.188-.250	.450	.610
	66	.251-.375	.575	.735
	68	.376-.500	.700	.860
	610	.501-.625	.825	.985
	612	.626-.750	.950	1.110
	614	.751-.875	1.075	1.235
	616	.876-1.000	1.200	1.360
1/4	618	1.001-1.125	1.325	1.485
	82	.020-.125	.375	.555
	84	.126-.250	.500	.680
	86	.251-.375	.625	.805
	88	.376-.500	.750	.930
	810	.501-.625	.875	1.055
	812	.626-.750	1.000	1.180
	814	.751-.875	1.125	1.305
	816	.876-1.000	1.250	1.430
	818	1.001-1.125	1.375	1.555
	820	1.126-1.250	1.500	1.680

Installed Values in Nominal Grip (lbs)

Domed Head, Large Flange and 120° Flush Head

Diam.	Body Material	C Steel Plated	Aluminum	Aluminum	Stainless Steel	Stainless Steel
	Mandrel Material	Carbon Steel	Carbon Steel	Aluminum	Stainless Steel	Carbon Steel
3/32	Shear	150	110	80	230	230
	Tensile	210	170	115	320	320
1/8	Shear	285	200	150	500	500
	Tensile	420	300	230	650	650
5/32	Shear	420	320	220	800	800
	Tensile	565	450	340	900	900
3/16	Shear	600	435	310	995	995
	Tensile	850	725	485	1350	1350
1/4	Shear	1200	850	580	1700	1700
	Tensile	1475	1150	770	2200	2200

Sureset™ rivets feature extended grip ranges to meet a variety of fastening applications. They provide a permanent, vibration-resistant clamp and are widely used in automotive, HVAC, light construction and electronic cabinetry.

Not all items are represented in this book. Call your Duncan Bolt sales office for complete stock status.



Duncan Bolt is an Authorized Distributor of Gesipa® Rivets

Bulb-Tite Rivets

GESIPA's Bulb-tites are the original high-strength structural tri-folding blind rivets. The comprehensive Bulb-tite product line offers a broad range of diameters, head styles and material choices.

Aluminum Rivet/ Aluminum Mandrel

Head Style	Rivet Diameter	Gesipa Part #	Grip Range (inches)	Hole Size Drill #	Typical Shear	Typical Tensile
Countersunk Head Recessed Crown	3/16	RV6601-6-4	.106 - .250	.209 - .221 #4	675	450
		RV6601-6-6	.187 - .375			
		RV6601-6-8	.312 - .500			
		RV6601-6-10	.437 - .625			
		RV6601-6-12	.563 - .750			
	1/4	RV6601-8-4	.150 - .250	.250 - .263 E	1100	675
		RV6601-8-5	.187 - .375			
		RV6601-8-8	.250 - .500			
Low Profile Flat Head	5/32	RV6602-5-4	.125 - .250	.162-.167 #20	350	225
		RV6602-5-6	.187 - .375			
		RV6602-5-8	.250 - .500			
	3/16	RV6602-6-4	.125 - .250	.209 - .221 #4	675	450
		RV6602-6-6	.187 - .375			
		RV6602-6-8	.250 - .500			
		RV6602-6-10	.375 - .625			
		RV6602-6-12	.500 - .750			
	1/4	RV6602-8-4	.125 - .250	.250 - .263 1/4	1100	675
		RV6602-8-6	.187 - .375			
		RV6602-8-8	.250 - .050			
		RV6602-8-10	.375 - .625			
Dome Head Protruding Crown	5/32	RV6604-5-4	.067 - .250	.162 - .167 #20	350	225
		RV6604-5-8	.250 - .500			
	3/16	RV6604-6-3	.050 - .187	.209 - .221 #4	675	450
		RV6604-6-4	.062 - .250			
		RV6604-6-6	.187 - .375			
		RV6604-6-8	.312 - .050			
		RV6604-6-10	.437 - .625			
		RV6604-6-12	.563 - .750			
	1/4	RV6604-8-4	.062 - .250	.250 - .263 1/4 Max.	1100	675
		RV6604-8-6	.125 - .375			
		RV6604-8-8	.250 - .050			
		RV6604-8-10	.375 - .625			
	9/32	RV6603-9-3	.032 - .187 .032 - .375 .250 - .625 .375 - .750	.304 - .3125 5/16	1500	1100
	Large Flange Protruding Crown	9/32	RV6605-9-6 RV6605-9-10 RV6605-9-12	.042 - .375 .250 - .625 .375 - .750	.308 - .327 5/16	1500
Low Profile Head Recessed Crown	3/16	RV6606-6-3	.050 - .187	.209 - .221 #4	675	450
		RV6606-6-4	.062 - .250			
		RV6606-6-6	.187 - .375			
		RV6606-6-8	.312 - .500			
		RV6606-6-10	.437 - .750			
1/4	RV6606-8-4	.040 - .250	.250 - .263 1/4	950	575	
	RV6606-8-6	.125 - .375				
	RV6606-8-8	.250 - .500				
	RV6606-8-10	.375 - .625				



Steel Rivet/Steel Mandrel

Head Style	Rivet Diameter	Gesipa Part #	Grip Range (inches)	Hole Size Drill #	Typical Shear	Typical Tensile
Countersunk Head Recessed Crown	1/4	RV6671-8-4	.150 - .250	.250 - .263 1/4	1250	950
		RV6671-8-6	.187 - .375			
		RV6671-8-8	.250 - .050			
Dome Head Recessed Crown	1/4	RV6676-8-4	.040 - .250	.250 - .263 1/4	1250	950
		RV6676-8-6	.125 - .375			
		RV6676-8-8	.250 - .050			
		RV6676-8-10	.375 - .625			



Monel Rivet/Stainless Steel Mandrel

Head Style	Rivet Diameter	Gesipa Part #	Grip Range (inches)	Hole Size Drill #	Typical Shear	Typical Tensile
Dome Head Recessed Crown	1/4	RV6696-8-4	.040 - .250	.250 - .263 1/4	2100	1455
		RV6696-8-6	.125 - .375			
		RV6696-8-8	.250 - .050			
		RV6696-8-10	.375 - .625			

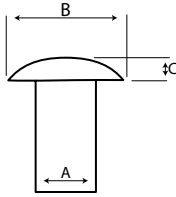
Not all items are represented in this book. Call your Duncan Bolt sales office for complete stock status.

Solid Aluminum Rivets

Standard commercial tolerances apply to dimensional specs.

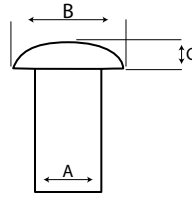
Standard Brazier Head

A	B	C
1/8	.312	.062
5/32	.390	.078
3/16	.467	.094
1/4	.625	.125
5/16	.780	.156
3/8	.937	.187



Standard Universal Head

A	B	C
1/8	.250	.059
5/32	.312	.072
3/16	.375	.085
1/4	.500	.112
5/16	.625	.138
3/8	.750	.166

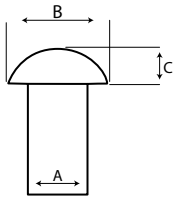


Alloys available:

- » 1100F Soft
- » 2117T4 Hard
- » 6061T6
- » 6053T4
- » 6053T61
- » 5056H32

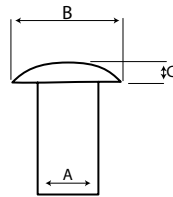
Standard Round Head

A	B	C
1/8	.250	.094
5/32	.312	.117
3/16	.375	.140
1/4	.500	.187
5/16	.625	.234
3/8	.750	.281



Modified Brazier Head

A	B	C
1/8	.235	.047
5/32	.312	.063
3/16	.390	.078
1/4	.468	.094
5/16	.625	.125
3/8	.781	.156



Other Rivets & Accessories

Nylon Drive Rivets

Use to attach wall liners, scuff rail & plywood.

Nylon Body, Metal Pin- Truss Head

- » 1/4 x 3/4
- » 1/4 x 1
- » 1/4 x 1 1/2
- » 1/4 x 2



Unitap Style

- » 1/4 x 1
- » 1/4 x 1 1/2
- » 1/4 x 2



Air Hammers & Accessories

- » .401 and .498 Shank Air Hammers
- » Punches
- » Chisels
- » Cutters
- » Springs



Roll-Up Door Rivets

- » 1/4 x 1
- » 1/4 x 1 1/8
- » 1/4 x 1 1/4



Solid Rivet Sets

Aircraft Quality, Made in the USA

.401 Shank Rivet Sets for 3/16 and 1/4 Rivets

.498 Shank Rivet Sets for 5/16 and 3/8 Rivets

- » Standard Brazier Head
- » Modified Brazier Head
- » Universal Head
- » Round Brazier Head



Not all items are represented in this book. Call your Duncan Bolt sales office for complete stock status.

Duncan Bolt is an Authorized Distributor of Recoil®

Recoil® Thread Repair Kits

Recoil thread repair kits contain a quality HSS tap, installation tool, precision stainless steel inserts and instructions in a sturdy reusable container. Recoil has a full range of problem solving repair kits available in single or multiple size format.

UNC Thread Sizes

Size	Part #	PCS/Kit
#2-56	33520	10
#3-48	33530	10
#4-40	33540	10
#5-40	33550	10
#6-32	33560	10
#8-32	33580	10
#10-24	33600	10
#12-24	33620	10
1/4-20	33040	10
5/16-18	33050	10
3/8-16	33060	10
7/16-14	33070	5
1/2-13	33080	5
9/16-12	33090	5
5/8-11	33100	5
11/16-11	33110	5
3/4-10	33120	5
7/8-9	33140	5
1-8	33160	5
1 1/8-7	33180	5
1 1/4-7	33200	5
1 3/8-6	33220	5
1 1/2-6	33240	4

UNF Thread Sizes

Size	Part #	PCS/Kit
#3-56	34530	10
#4-48	34540	10
#6-40	34560	10
#8-36	34580	10
#10-32	34600	10
#12-28	34620	10
1/4-28	34040	10
5/16-24	34050	10
3/8-24	34060	10
7/16-20	34070	5
1/2-20	34080	5
9/16-18	34090	5
5/8-18	34100	5
3/4-16	34120	5
4/8-14	34140	5
1-12	34160	5
1-14	34160-14	5
1 1/8-12	34180	5
1 1/4-12	34200	5
1 3/8-12	34220	5
1 1/2-12	34240	4

NPT Thread Sizes

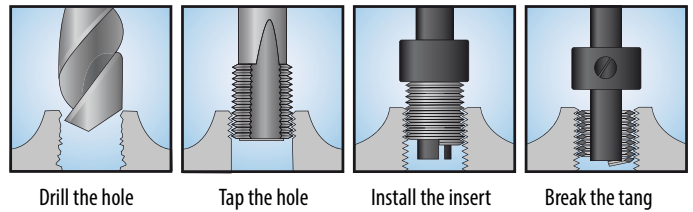
Size	Part #	PCS/Kit
1/8-27	36020	10
1/4-18	36040	10
3/8-18	36060	10
1/2-14	36080	5
3/4-14	36120	5

Each Kit Contains:

- » Quality High Speed Tap
- » Packaged Quantity of Inserts
- » Installation Tool
- » Instructions
- » Reusable Container

Also available in:

- » Metric Coarse & Fine
- » Spark Plug Sizes
- » British Threads



Copper Battery Lugs

Standard Bare Copper Lugs- Crimp or Solder



1/4" Stud (.250) Clearance (.336)

Part #	Amp	Cable Gauge
906515	70	6/4
906525	90	2
906535	125	1
906545	150	1/0
906555	175	2/0

5/16" Stud (.3125) Clearance (.336)

Part #	Amp	Cable Gauge
906615	70	6/4
906625	90	2
906635	1251	1
906645	150	1/0
906655	175	2/0
906665	225	3/0
906675	225	4/0

3/8" Stud (.375) Clearance (.405)

Part #	Amp	Cable Gauge
906815	70	6/4
906825	90	2
906835	125	1
906845	150	1/0
906855	175	2/0
906865	225	3/0
906875	225	4/0

1/2" Stud (.500) Clearance (.525)

Part #	Amp	Cable Gauge
907825	90	2
907835	1251	1
907845	150	1/0
907855	175	2/0
907865	225	3/0
907875	225	4/0

Can't find what you're looking for?
Call Duncan Bolt- we can help!

Not all items are represented in this book. Call your Duncan Bolt sales office for complete stock status.

Bolts, Nuts, Screws

Frame Bolts, Flanged, Grade 8 Alloy Steel, Coarse Thread

Indented Hex Flange, Black Phosphate & Oil. Manufactured to IFI-111 & SAE J429. Tensile Strength 150,000 PSI.

Part #	Size	Carton Qty	Wt/100 LBS
1406BF	1/4-20 X 3/8	2000	1.00
1408BF	1/4-20 X 1/2	2000	1.38
1410BF	1/4-20 X 5/8	2000	1.50
1412BF	1/4-20 X 3/4	2000	1.60
1416BF	1/4-20 X 1	2000	1.88
1420BF	1/4-20 X 1 1/4	2000	2.10
1424BF	1/4-20 X 1 1/2	2000	2.38
1428BF	1/4-20 X 1 3/4	1500	2.83
1432BF	1/4-20 X 2	1000	3.18
1436BF	1/4-20 X 2 1/4	750	3.50
1440BF	1/4-20 X 2 1/2	500	4.00
1448BF	1/4-20 X 3	500	4.60
1456BF	1/4-20 X 3 1/2	400	5.24
3108BF	5/16-18 X 1/2	1500	2.60
3110BF	5/16-18 X 5/8	1500	2.70
3112BF	5/16-18 X 3/4	1500	2.79
3114BF	5/16-18 X 7/8	1300	3.06
3116BF	5/16-18 X 1	1300	3.32
3120BF	5/16-18 X 1 1/4	1200	3.74
3124BF	5/16-18 X 1 1/2	1000	4.48
3128BF	5/16-18 X 1 3/4	1000	5.00
3132BF	5/16-18 X 2	800	5.54
3136BF	5/16-18 X 2 1/4	800	6.17
3140BF	5/16-18 X 2 1/2	750	6.25
3144BF	5/16-18 X 2 3/4	700	6.90
3148BF	5/16-18 X 3	700	7.55
3156BF	5/16-18 X 3 1/2	500	8.60
3164BF	5/16-18 X 4	500	9.80
3708BF	3/8-16 X 1/2	1000	3.82
3710BF	3/8-16 X 5/8	1000	4.06
3712BF	3/8-16 X 3/4	1000	4.50
3716BF	3/8-16 X 1	1000	5.28
3720BF	3/8-16 X 1 1/4	900	5.87
3724BF	3/8-16 X 1 1/2	700	6.74
3728BF	3/8-16 X 1 3/4	700	7.38
3732BF	3/8-16 X 2	600	8.17
3736BF	3/8-16 X 2 1/4	500	9.00
3740BF	3/8-16 X 2 1/2	500	9.72
3744BF	3/8-16 X 2 3/4	450	10.67
3748BF	3/8-16 X 3	400	11.27
3752BF	3/8-16 X 3 1/4	300	12.07
3456BF	3/8-16 X 3 1/2	300	12.86
3764BF	3/8-16 X 4	250	14.15

Part #	Size	Carton Qty	Wt/100 LBS
4316BF	7/16-14 X 1	600	7.51
4320BF	7/16-14 X 1 1/4	500	8.33
4324BF	7/16-14 X 1 1/2	500	9.00
4328BF	7/16-14 X 1 3/4	500	10.49
4332BF	7/16-14 X 2	400	11.19
4336BF	7/16-14 X 2 1/4	300	12.58
4340BF	7/16-14 X 2 1/2	300	13.50
4348BF	7/16-14 X 3	300	15.65
4356BF	7/16-14 X 3 1/2	200	17.20
4364BF	7/16-14 X 4	200	20.00
5012BF	1/2-13 X 3/4	500	11.10
5016BF	1/2-13 X 1	500	12.51
5020BF	1/2-13 X 1 1/4	400	13.00
5024BF	1/2-13 X 1 1/2	400	13.32
5028BF	1/2-13 X 1 3/4	350	14.50
5032BF	1/2-13 X 2	300	16.17
5036BF	1/2-13 X 2 1/4	250	17.74
5040BF	1/2-13 X 2 1/4	250	18.88
5044BF	1/2-13 X 2 3/4	250	20.64
5048BF	1/2-13 X 3	200	21.51
5052BF	1/2-13 X 3 1/4	200	22.90
5056BF	1/2-13 X 3 1/2	200	24.11
5060BF	1/2-13 X 3 3/4	175	25.47
5064BF	1/2-13 X 4	175	27.00
5072BF	1/2-13 X 4 1/2	125	30.20
5080BF	1/2-13 X 5	125	32.95
6220BF	5/8-11 X 1 1/4	250	21.30
6224BF	5/8-11 X 1 1/2	225	22.75
6228BF	5/8-11 X 1 3/4	200	25.00
6232BF	5/8-11 X 2	175	26.66
6236BF	5/8-11 X 2 1/4	175	29.50
6240BF	5/8-11 X 2 1/2	150	31.00
6244BF	5/8-11 X 2 3/4	150	33.50
6248BF	5/8-11 X 3	125	36.00
6252BF	5/8-11 X 3 1/4	100	38.25
6256BF	5/8-11 X 3 1/2	100	40.50
6264BF	5/8-11 X 4	100	44.50
6268BF	5/8-11 X 4 1/4	100	46.55
6272BF	5/8-11 X 4 1/2	90	49.00
6280BF	5/8-11 X 5	80	53.25
6288BF	5/8-11 X 5 1/2	50	57.80

Part #	Size	Carton Qty	Wt/100 LBS
7520BF	3/4-10 X 1 1/4	125	34.55
7524BF	3/4-10 X 1 1/2	125	38.05
7528BF	3/4-10 X 1 3/4	125	40.00
7532BF	3/4-10 X 2	120	41.00
7536BF	3/4-10 X 2 1/4	100	44.50
7540BF	3/4-10 X 2 1/2	100	49.00
7544BF	3/4-10 X 2 3/4	100	52.00
7548BF	3/4-10 X 3	90	54.00
7552BF	3/4-10 X 3 1/4	80	57.90
7556BF	3/4-10 X 3 1/2	80	60.50
7564BF	3/4-10 X 4	70	67.00
7575BF	3/4-10 X 4 1/2	60	73.75
7580BF	3/4-10 X 5	60	81.00



Flanged Stover Lock Nuts, Coarse Thread

For use with Grade 8 Frame bolts. Medium carbon, heat treated steel. Proof Load 150,000 PSI.

Part #	Size	Carton Qty	Wt/100 LBS
37NOR	3/8-16	1600	23.90
50NOR	1/2-13	700	55.70
62NOR	5/8-11	350	108.90
75NOR	3/4-10	250	177.50

Not all items are represented in this book. Call your Duncan Bolt sales office for complete stock status.

Frame Bolts, Flanged, Grade 8 Alloy Steel, Fine Thread

Indented Hex Flange, Black Phosphate & Oil. Manufactured to IFI-111 & SAE J429. Tensile Strength 150,000 PSI.

Part #	Size	Carton Qty	Wt/100 LBS
3216BF	5/16-24 X 1	800	8.58
3220BF	5/16-24 X 1 1/4	800	4.73
3224BF	5/16-24 X 1 1/2	1000	4.75
3232BF	5/16-24 X 2	500	5.87
3816BF	3/8-24 X 1	1000	5.39
3820BF	3/8-24 X 1 1/4	900	6.05
3840BF	3/8-24 X 1 1/2	500	9.83
4416BF	7/16-20 X 1	600	7.80
5120BF	1/2-20 X 1 1/4	400	12.50
5124BF	1/2-20 X 1 1/2	300	13.50
5128BF	1/2-20 X 1 3/4	300	15.42

Part #	Size	Carton Qty	Wt/100 LBS
5132BF	1/2-20 X 2	300	16.48
5136BF	1/2-20 X 2 1/4	250	18.50
5140BF	1/2-20 X 2 1/2	250	19.50
5144BF	1/2-20 X 2 3/4	200	21.00
5148BF	1/2-20 X 3	200	22.35
5156BF	1/2-20 X 3 1/2	150	25.01
5164BF	1/2-20 X 4	150	28.00
5172BF	1/2-20 X 4 1/2	140	30.20
5180BF	1/2-20 X 5	120	33.00
6324BF	5/8-18 X 1/2	200	26.50
6328BF	5/8-18 X 1 3/4	175	28.20
6332BF	5/8-18 X 2	170	29.00
6336BF	5/8-18 X 2 1/4	150	30.70
6340BF	5/8-18 X 2 1/2	140	33.15

Part #	Size	Carton Qty	Wt/100 LBS
6344BF	5/8-18 X 2 3/4	140	35.10
6348BF	5/8-18 X 3	125	37.05
6356BF	5/8-18 X 3 1/2	115	40.95
6364BF	5/8-18 X 4	100	45.10
6372BF	5/8-18 X 4 1/2	90	49.30
6380BF	5/8-18 X 5	75	54.00
7628BF	3/4-16 X 1 3/4	65	40.15
7632BF	3/4-16 X 2	60	42.85
7636BF	3/4-16 X 2 1/4	50	46.35
7640BF	3/4-16 X 2 1/2	50	50.50
7648BF	3/4-16 X 3	45	55.75
7656BF	3/4-16 X 3 1/2	40	63.65
7664BF	3/4-16 X 4	70	69.30

Flanged Stover Lock Nut, Fine Thread

For use with Grade 8 Frame Bolts. Medium carbon, heat treated steel. Proof Load 150,000 PSI.

Part #	Size	Carton Qty	Wt/100 LBS
38NOR	3/8-24	1600	23.10
44NOR	7/16-20	950	39.00
51NOR	1/2-20	700	53.95
63NOR	5/8-18	350	107.04
76NOR	3/4-16	250	179.50

Bottom Rail Bolts

All with 1000-hour long life coating.

Size	Styles		
5/16-18 x 15/16	Torx	Truss	Stainless
3/8-16 x 1 1/8	Torx	Truss	Stainless
5/16-18 x 1	Torx	Truss	Grade 5 Longlife
3/8-16 x 1 1/4*	Torx	Truss	Grade 5 Longlife
3/8-16 x 1 7/8	Torx	Truss	Grade 5 Longlife
3/8-16 x 2 1/2	Torx	Truss	Grade 5 Longlife

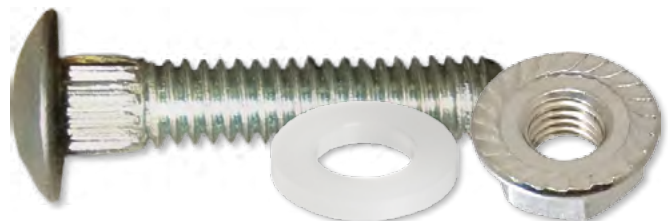


Bottom Crossmember Bolt Kit

Includes 8 Pieces of the following:

- » 3/8-16 x 1 1/4 Ribbed Neck Carriage Bolts, Grade 5.1, Zinc Plated
- » 3/8-16 Hardened Serrated Flange Nuts, Zinc Plated
- » 3/8 Nylon Washers

Matching nuts also in stock!
* Also available in Button Head



Floor Board Screws

Flat Head, Torx, Type F

Size	Carton Quantity	Carton Weight	Drive
1/4-20 x 1	3000	39	T-30
1/4-20 x 1 1/4	3000	47	T-30
1/4-20 x 1 1/2	2000	37	T-30
1/4-20 x 1 3/4	2000	45	T-30
1/4-20 x 2	1500	40	T-30
1/4-20 x 2 1/4	1400	36	T-30
1/4-20 x 2 1/2	1200	35	T-30
1/4-20 x 3	1000	33	T-30
1/4-20 x 3 1/2	800	32	T-30
1/4-20 x 4	500	23	T-30
1/4-20 x 5	500	28	T-30
1/4-20 x 6	500	32	T-30
5/16-18 x 1 3/4	1400	48	T-40
5/16-18 x 2	1200	45	T-40
5/16-18 x 2 1/2	800	38	T-40
5/16-18 x 3	600	41	T-40
5/16-18 x 4	500	45	T-40
5/16-18 x 5	300	30	T-40
5/16-18 x 6	200	24	T-40



Also available in Pan Head and Flat Head. Some sizes also available in zinc.

Not all items are represented in this book. Call your Duncan Bolt sales office for complete stock status.

Wire, Clamps, Cable Ties

Primary Wire

Copper wire with fine stranding for flexibility. PVC insulation provides abrasive strength and resistance to gas, moisture, acid and oil. Available in 100, 500 and 1000 foot rolls.

Gauge	Purple	Black	Orange	Green	White	Brown	Pink	Red	Blue	Yellow	Grey
10	54100	54101	54102	54109	54104	54105	54106	54107	54108	54109	541010
12	54120	54121	54122	54123	54124	54125	54126	54127	54128	54129	541210
14	54140	54141	54142	54143	54144	54145	54146	54147	54148	54149	541410
16	54160	54161	54162	54163	54164	54165	54166	54167	54168	54169	541610
18	54180	54181	54182	54183	54184	54185	54186	54187	54188	54189	541810



Recommended Uses:

- » 10 Gauge Generators, heater switches, air conditioners, ammeter & panel lights.
- » 12 Gauge Light & ignition switches.
- » 14 Gauge Horn button circuit, head lights, gas gauge to coil, AC power port (cigarette lighter).
- » 16 Gauge Header leads, gas gauge, directionals, stop signal, generator to starter.
- » 18 Gauge Single-bulb low amp circuits, clocks.

Nylon Cable Clamps

Hole Diameter: 0.203" Quantity: 100/ bag



Item #	Approximate Diameter	Max Size	Material Color	Carton Quantity
CC-1/8-N-100	3/8	1/8	Natural	10,000
CC-1/8-UV-100	3/8	1/8	Black	10,000
CC-3/16-N-100	3/8	3/16	Natural	10,000
CC-3/16-UV-100	3/8	3/16	Black	10,000
CC-1/4-N-100	3/8	1/4	Natural	10,000
CC-1/4-UV-100	3/8	1/4	Black	10,000
CC-5/16-N-100	3/8	5/16	Natural	10,000
CC-5/16-UV-100	3/8	5/16	Black	10,000
CC-3/8-N-100	3/8	3/8	Natural	10,000
CC-3/8-UV-100	3/8	3/8	Black	10,000
CC-7/16-N-100	3/8	7/16	Natural	10,000
CC-7/16-UV-100	3/8	7/16	Black	10,000
CC-1/2-N-100	1/2	1/2	Natural	5,000
CC-1/2-UV-100	1/2	1/2	Black	5,000
CC-5/8-N-100	1/2	5/8	Natural	5,000
CC-5/8-UV-100	1/2	5/8	Black	5,000
CC-3/4-N-100	1/2	3/4	Natural	5,000
CC-3/4-UV-100	1/2	3/4	Black	5,000
CC-7/8-N-100	1/2	7/8	Natural	5,000
CC-7/8-UV-100	1/2	7/8	Black	5,000
CC-1-N-100	1/2	1	Natural	5,000
CC-1-UV-100	1/2	1	Black	5,000
CC-1 1/4-N-100	1/2	1 1/4	Natural	5,000
CC-1 1/4-UV-100	1/2	1 1/4	Black	5,000
CC-1 1/2-N-100	1/2	1 1/2	Natural	5,000
CC-1 1/2-UV-100	1/2	1 1/2	Black	5,000

Split Loom- UV Black

250 Feet/Roll. Tolerance +/- .030

Item #	Size
LOOM-1/4"-250'	1/4 x 250 FT
LOOM-3/8"-250'	3/8 x 250 FT
LOOM-1/2"-100'	1/2 x 100 FT
LOOM-5/8"-100'	5/8 x 100 FT
LOOM-1"-50'	1 x 50 FT
LOOM-1 1/4"-50'	1 1/4 x 50 FT

**Bulk stock also available!



Butt Connectors

- » 12-16 Gauge Yellow Vinyl
- » 16-14 Gauge Blue Vinyl
- » 22-18 Gauge Red Vinyl



** More Butt Connector Styles in stock!

Not all items are represented in this book. Call your Duncan Bolt sales office for complete stock status.

Cable Ties



Item #	Length	Bundle Diameter	Bag Quantity	Material Color
50 Pound- Looped Tensile				
7-50-N-100	7"	1 3/4"	100	Natural
7-50-N-1000	7"	1 3/4"	1000	Natural
7-50-UV-100	7"	1 3/4"	100	Black
7-50-UV-1000	7"	1 3/4"	1000	Black
8-50-N-100	8"	2"	100	Natural
8-50-N-1000	8"	2"	1000	Natural
8-50-UV-100	8"	2"	100	Black
8-50-UV-1000	8"	2"	1000	Black
11-50-N-100	11"	3"	100	Natural
11-50-N-1000	11"	3"	1000	Natural
11-50-UV-100	11"	3"	100	Black
11-50-UV-1000	11"	3"	1000	Black
14-50-N-100	14"	4"	100	Natural
14-50-N-1000	14"	4"	1000	Natural
14-50-UV-100	14"	4"	100	Black
14-50-UV-1000	14"	4"	1000	Black

Item #	Length	Bundle Diameter	Bag Quantity	Material Color
120 Pound- Looped Tensile				
15-120-N-50	15"	4"	50	Natural
15-120-N-100	15"	4"	100	Natural
15-120-UV-50	15"	4"	50	Black
15-120-UV-100	15"	4"	100	Black
175 Pound- Looped Tensile				
8-175-N-100	8"	2"	100	Natural
8-175-UV-100	8"	2"	100	Black
12-175-N-100	12"	3"	100	Natural
12-175-UV-100	12"	3"	100	Black
18-175-N-50	18"	5"	50	Natural
18-175-UV-50	18"	5"	50	Black
21-175-N-50	21"	6"	50	Natural
21-175-UV-50	21"	6"	50	Black
24-175-N-50	24"	7"	50	Natural
24-175-UV-50	24"	7"	50	Black
30-175-N-50	30"	9"	50	Natural
30-175-UV-50	30"	9"	50	Black
36-175-N-50	36"	11"	50	Natural
36-175-UV-50	36"	11"	50	Black

Hose Clamps

A general purpose clamp for automobiles, plumbing, home and garden and general clamping applications with anti-corrosive properties varying with the number of components made from stainless steel.

#	Diameter Range		600 Series	611 Series
	Min	Max	Part #	Part #
6	3/8	7/8	600-006	611-006
8	7/16	1	600-008	611-008
10	9/16	1-1/16	600-010	611-010
12	9/16	1-1/4	600-012	611-012
16	11/16	1-1/2	600-016	611-016
20	3/4	1-3/4	600-020	611-020
24	1-1/16	2	600-024	611-024
28	1-5/16	2-2 1/4	600-028	611-028
32	1-9/16	2-1/2	600-032	611-032
36	1-13/16	2-3/4	600-036	611-036
40	2-1/16	3	600-040	611-040
44	2-5/16	3-1/4	600-044	611-044
48	2-9/16	3-1/2	600-048	611-048
52	2-13/16	3-3/4	600-052	611-052
56	3-1/16	4	600-056	611-056
60	3-5/16	4-1/4	600-060	611-060
64	3-1/2	4-1/2	600-064	611-064
72	3	5	600-072	611-072
80	3-1/2	5-1/2	600-080	611-080
88	4	6	600-088	61-088
96	4-1/2	6-1/2	600-096	611-096
104	5	7	600-104	611-104
116	6-3/4	7-3/4	--	611-116



600 Series Hose Clamps

- » 5/16" Hex Slotted Carbon Steel Screw
- » 1/2" 201 Stainless Steel Band
- » Carbon Steel Housing

611 Series Hose Clamps

- » 5/16" Hex Slotted Carbon Steel Screw
- » 1/2" 201 Stainless Steel Band
- » 301 Stainless Steel Housing

Mini Series Clamps

Diameter Range		
Min	Max	Part #
7/32	5/8	325-004
7/16	11/16	325-005
5/16	7/8	325-006
7/16	1	325-008
1/2	1-1/16	325-010
9/16	1-1 1/4	325-012
11/16	1-1/2	325-016
7/8	1-3/4	325-020

325 Series Hose Clamps

- » 1/4" Hex Slotted Carbon Steel Screw
- » 5/16" 201 Stainless Steel Band
- » 301 Stainless Steel Housing



Not all items are represented in this book. Call your Duncan Bolt sales office for complete stock status.

Electrical Terminals

Spades

Wire Size	Stud Size	Butted Seam	Brazed Seam	Vinyl Insulated	2 Piece Nylon	3 Piece Nylon	Heat Shrink
24-20	4	--	12414	22414	--	32414	--
	6	--	12416	22416	--	32416	--
	8	--	12418	22418	--	32418	--
	10	--	12420	22420	--	32420	--
22-16	6	10050	--	20050	20050N	30050	40050
	8	10060	10060BZ	20060	20060N	30060	40060
	10	10070	10070BZ	20070	20070N	30070	40070
16-14	6	10140	--	20140	20140N	30140	40140
	8	10150	10150BZ	20150	20150N	30150	40150
	10	10160	10160BZ	20160	20160N	30160	41060
12-10	6	10270	--	20270	20270N	30270	40270
	8	10280	1020BZ	20280	20280N	30280	40280
	10	10290	10290BZ	20290	20290N	30290	40290
	1/4	10234	--	20234	20234N	30234	40234

Rings

Wire Size	Stud Size	Butted Seam	Brazed Seam	Vinyl Insulated	2 Piece Nylon	3 Piece Nylon	Heat Shrink
22-16	6	10020	10020BZ	20020	20020N	30020	40020
	8	10030	10030BZ	20030	20030N	30030	40030
	10	10040	10040BZ	20040	20040N	30040	40040
	1/4	10041	10041BZ	20041	20041N	30041	40041
	5/16	10042	10042BZ	20042	20042N	30042	40042
	3/8	10043	--	20043	20043N	30043	40043
	6	10086	10086BZ	20086	20086N	30086	40086
16-14	8	10090	10090BZ	20090*	20090N	20090	40090
	10	10100	10100BZ	20100	20100N	20100	40100
	1/4	10101	10101BZ	20101	20101N	20101	40101
	5/16	10102	10102BZ	20102	20101N	20101	40101
	3/8	10103	--	20103	20103N	30103	40103
12-10	6	10210	10210BZ	20210	20210N	30210	40210
	8	10220	10220BZ	20220	20220N	20220	40220
	10	10230	10230BZ	20230	20230N	30230	40230
	1/4	10240	10240BZ	20240	20240N	30240	40240
	1/4 SLIM	10245	10245BZ	20245	20245N	30245	40245
	5/16	10250	10250BZ	20250	20250N	30250	40250
	3/8	10260	10260BZ	20260	20260N	30260	40260
	1/2	10233	--	20233	2033N	30233	40233
	8-10	--	10610	20610	20610N	--	40610
	12-1/4	--	10611	20611	20611N	--	40611
8	5/16	--	10612	20612	20612N	--	40612
	3/8	--	10613	20613	20613N	--	40613
	1/2	--	10614	20614	20614N	--	40614
6	8-10	--	10615	20615	20615N	--	--
	12-1/4	--	10616	20616	20616N	--	--
	5/16	--	10617	20617	20617N	--	--
	3/8	--	10618	20618	20618N	--	--
	1/2	--	10619	20619	20619N	--	--
4	12-1/4	--	10620	20620	20620N	--	--
	5/16	--	10621	20621	206214N	--	--
	3/8	--	10622	20622	20622N	--	--
	1/2	--	10623	20623	20623N	--	--
2	12-1/4	10628	20628	20628N	--	--	--
	5/16	10629	20629	20629N	--	--	--
	3/8	10630	20630	20630N	--	--	--
	1/2	10631	20631	20631N	--	--	--

Female Disconnects

Wire Size	Tab Size	Butted Seam	Vinyl Insulated	2 Piece Nylon	3 Piece Nylon	Heat Shrink
22-16	.110 x .020	--	20191	--	30191	--
	.187 x .020	--	20192	--	30192	--
	.205 x .020	--	20193	--	--	--
	.250 x .030	10176	20176	20176N	30176	40176
16-14	.110 x .020	--	20194	--	30194	--
	.187 x .020	--	20195	--	30195	--
	.205 x .020	--	20196	--	--	--
	.250 x .030	10180	20180	20180N	30180	40180
12-10	.250 x .030	10187	20187	--	30187	40187

Male Disconnects

Wire Size	Tab Size	Butted Seam	Vinyl Insulated	2 Piece Nylon	3 Piece Nylon	Heat Shrink
22-16	.110 x .020	--	20088	--	--	--
	.187 x .020	--	20197	--	30197	--
	.250 x .030	10177	20177	20177N	30177	40177
16-14	.110 x .020	--	20089	--	--	--
	.187 x .020	--	20198	--	30198	--
	.250 x .030	10187	20181	20181N	30181	40181
12-10	.250 x .030	10187	20186	--	30186	40186

Hooks

Wire Size	Stud Size	Butted Seam	Vinyl Insulated	2 Piece Nylon	3 Piece Nylon	Heat Shrink
22-16	10	10087	20087	20087N	30087	40087
16-14	10	10120	20120	20120N	30120	40120
12-10	10	10130	20130	20130N	30130	40130

Not all items are represented in this book. Call your Duncan Bolt sales office for complete stock status.

Air Brake Fittings for Nylon Tubing

Used with nylon tubing- SAE J844, type3. Meets all air brake specifications. Special tools are not required.

Typical applications include air brake systems, air control and gauge lines.

Male Connector



Part #	Tube O.D.	Pipe Thread	QTY
1468-4	1/4	1/8	10
1468-44	1/4	1/4	10
1468-46	1/4	3/8	5
1468-62	3/8	1/8	10
1468-6	3/8	1/4	10
1468-66	3/8	3/8	5
1468-68	3/8	1/2	5
1468-8	1/2	1/4	5
1468-86	1/2	3/8	5
1468-88	1/2	1/2	5
1468-812	1/2	3/4	2
1468-10	5/8	3/8	2
1468-8	5/8	1/2	2
1468-1012	5/8	3/4	2
1468-128	3/4	1/2	2
1468-1212	3/4	3/4	2

Male Elbow



Part #	Tube O.D.	Pipe Thread	QTY
1469-2	1/4	1/8	10
1469-44	1/4	1/4	5
1469-46	1/4	3/8	5
1469-62	3/8	1/8	10
1469-62L	3/8	1/8 long	5
1469-6	3/8	1/4	10
1469-66	3/8	3/8	5
1469-68	3/8	1/2	5
1469-84	1/2	1/4	2
1469-8	1/2	3/8	2
1469-88	1/2	1/2	2
1469-106	5/8	3/8	2
1469-10	5/8	1/2	2
1469-1012	5/8	3/4	2
1469-126	3/4	3/8	2
1469-12	3/4	1/2	2
1469-1212	3/4	3/4	2

Tee Pipe on Run



Part #	Tube O.D.	Pipe Thread	QTY
1471-4	1/4	1/8	5
1471-44	1/4	1/4	5
1471-6	3/8	1/4	5
1471-66	3/8	3/8	5
1471-8	1/2	3/8	2
1471-88	1/2	1/2	2
1471-10	5/8	1/2	2

Tee Pipe on Branch



Part #	Tube O.D.	Pipe Thread	QTY
1472-4	1/4	1/8	5
1472-44	1/4	1/4	5
1472-62	3/8	1/8	5
1472-6	3/8	1/4	5
1472-66	3/8	3/8	5
1472-8	1/2	3/8	2
1472-88	1/2	1/2	2
1472-10	5/8	1/2	2

Sleeve



Part #	Tube O.D.	QTY
1460-4	1/4	10
1460-6	3/8	10
1460-8	1/2	10
1460-10	5/8	5
1460-12	3/4	5

Nut



Part #	Tube O.D.	QTY
1461-4	1/4	5
1461-6	3/8	10
1461-8	1/2	5
1461-10	5/8	5
1461-12	3/4	5

Union



Part #	Tube O.D.	QTY
1462-4	1/4	5
1462-6	3/8	5
1462-8	1/2	2
1462-10	5/8	2
1462-12	3/4	2

Air Brake Fittings- Push to Connect

Male Connector



Part #	Tube O.D.	Pipe Thread	QTY
2468-4	1/4	1/8	5
2468-44	1/4	1/4	5
2468-46	1/4	3/8	5
2468-62	3/8	1/8	5
2468-6	3/8	1/4	5
2468-66	3/8	3/8	5
2468-68	3/8	1/2	5
2468-84	1/2	1/4	5
2468-8	1/2	3/8	5
2468-88	1/2	1/2	5

Swivel Male Branch Tee



Part #	Tube O.D.	Pipe Thread	QTY
2472-4	1/4	1/8	5
2472-44	1/4	1/4	5
2472-6	3/8	1/4	5
2472-66	3/8	3/8	5
2472-8	1/2	3/8	5

Swivel Male Elbow



Part #	Tube O.D.	Pipe Thread	QTY
2469-4	1/4	1/8	5
2469-44	1/4	1/4	5
2469-46	1/4	3/8	5
2469-62	3/8	1/8	5
2469-6	3/8	1/4	5
2469-66	3/8	3/8	5
2469-68	3/8	1/2	5
2469-8	1/2	3/8	5
2469-88	1/2	1/2	5

Union



Part #	Tube O.D.	QTY
2462-4	1/4	5
2462-6	3/8	5
2462-8	1/2	2

Not all items are represented in this book. Call your Duncan Bolt sales office for complete stock status.

Duncan Bolt is an Authorized Distributor of Vega® Industries

Vega® Drive Bits

Made from S2 modified steel and have a rockwell hardness of between 58~62 HRC.

Hex Insert Bits

- » 1/4" Shank
- » Sizes: 1/16" thru 5/16"
- » Length: 1"



Slotted Insert Bits

- » 1/4" Shank
- » Sizes: 3-4 thru 14-16
- » Lengths: 1 - 1 1/2"



Square Insert Bits

- » 1/4" Shank
- » One Piece Construction
- » Sizes: 0-3
- » Length: 1"



Torx Bits

- » 1/4 & 5/16" Shank
- » Sizes: 5-55
- » Lengths: 1 & 1 1/4"



Phillips Insert Bits

- » 1/4 & 5/16" Shank
- » Sizes: 0 - 4
- » Lengths: 1 - 2 1/2"



Also Available

- » Power Bits
- » Metric
- » Bit Holders



Pearl® Abrasives

Duncan Bolt is an Authorized Distributor of Pearl® Abrasives

For more than 50 years, Pearl® has been a quality distributor of coated and bonded abrasives, diamond super-abrasives and equipment. The following products and more are available at Duncan Bolt.

Depressed Center Grinding Wheels

- » Metal Aluminum Oxide Silver Line™
- » Metal Aluminum Oxide Premium
- » Metal Aluminum Oxide Redline™ MAX-A.O.™
- » Metal/Stainless Steel Zirconia
- » Aluminum D.A. Series



Fiber Discs- Coated Abrasives

Designed for blending, sanding and finish work.

- » Metal Aluminum Oxide Silver Line™
- » Metal Aluminum Oxide Premium
- » Metal/ Stainless Steel Zirconia Heavy Duty



Bench Grinding Wheels

Use on work benches or floor standing machines.

- » Metal Aluminum Oxide



Resin Cloth Belts

For use on belt sanding machines.

- » Metal Aluminum Oxide Premium



Cut-Off Wheels

Available sizes 2" to 20" diameters.

- » Metal Aluminum Oxide Silver Line™
- » Metal Aluminum Oxide Premium
- » Metal/ Stainless Steel SRT™



Shop Rolls

For use on a variety of small sanding jobs.

- » Metal Aluminum Oxide Premium

Sandpaper Sheets

9 x 11" waterproof sanding sheets.

- » General Purpose Silicon Carbide Premium

Also Available

- » Quickmount™ Backup Pads
- » Brushes- Wire, Acid, Scratch



Not all items are represented in this book. Call your Duncan Bolt sales office for complete stock status.

Duncan Bolt is an Authorized Distributor of Champion® Cutting Tools

Champion® Drill Bits

Not Available in Arizona

In depth inventory that includes twist drills, taps, end mills, reamers, burs, annular cutters and more.

Jobber Drills - XL5

Useful in portable drilling of stainless steel, titanium alloys and other hard to drill materials.

- » Straight Shank / Heavy Duty / Black & Bright Finish
- » 135° Split Point / NOMO® Surface Treatment / HSS



Black Gold® Jobber Drills - XGO

The black and gold surface treatment holds lubricant for smoother drilling. Penetrates faster and lasts longer.

- » Straight Shank / Heavy Duty / Black & Gold Finish
- » 135° Split Point / HSS



General Purpose Jobber Drills - USHD

Contractor series jobber drills are recommended for portable drilling of low to medium carbon steels, cast iron and wood.

- » Straight Shank / Steam Oxide Treated
- » 135° Split Point / HSS



Silver & Deming Drills - 712

Used in maintenance departments, machine shops, body shops and garages.

- » 1/2" Straight Shank / Black & Bright Finish
- » 118° Point / HSS



*Drill sets are also available.
Contact your Duncan Sales Rep
today for price and availability!*



Maintenance Reamers - SA80

Used in steel erection, automotive, truck & trailer manufacturing and repair. Cuts stainless steel & tough alloys. Deburs welded & punched holes. Ideal for maintenance & repair

- » 1/2" Straight Shank / Left Hand Helix / Right Hand Cut
- » Collar Stop / HSS



Screw Machine Drills - 1705

Recommended for the drilling of sheet metal, stainless steel, truck and mobile home bodies.

- » NAS 907-C / Heavy Duty / Black Oxide Treated
- » 135° Split Point / HSS



6" Aircraft Extension Drills - 7006

Designed for drilling holes in hard-to-reach places, especially in aircraft assembly work.

- » 135° Split Point / Black Oxide Treated / HSS



12" Aircraft Extension Drills - 7012

Designed for drilling holes in aircraft assembly work where long reach is needed.

- » 135° Split Point / Black Oxide Treated / HSS



Not all items are represented in this book. Call your Duncan Bolt sales office for complete stock status.

More Products and Services

Also Available at Duncan Bolt

Duncan Bolt has been a full service fastener house for more than 60 years. If we don't have it, chances are we can get it from one of our trusted suppliers. A sampling of our product breadth is below, but don't hesitate to contact us for any of your fastener or tooling needs!

- | | | |
|-------------------|---------------------|-------------------------|
| » Anchors | » Pins | » Structural Fasteners |
| » Bolts | » Pipes | » Strut |
| » Cap Screws | » Rivets | » Studs |
| » Forged Hardware | » Safety Supplies | » Tapping Screws |
| » Lock Washers | » Self Drill Screws | » Threaded Rod |
| » Machine Screws | » Socket Products | » Tool Repair & Rentals |
| » Metric | » Solar Products | » Washers |
| » Nuts | » Stainless Steel | » Wood Screws |



Trusted Suppliers

A few of our quality suppliers are listed below, although we have relationships with many USA and Import manufacturers across the globe.

- | | |
|---------------------|--------------|
| » Applied Bolting® | » Marson® |
| » AVK® | » Nord-Lock® |
| » Champion® | » Pearl® |
| » Chicago Hardware® | » Powers® |
| » Dormer® | » Redhead® |
| » Gesipa® | » Recoil® |
| » Hellermannntyton® | » Triumph® |
| » Huck® | |



Custom Kitting & Packaging

Duncan Bolt can help you streamline your production line with our custom packaging program. We can track, warehouse and kit a variety of parts which can help you reduce waste, lower labor costs and give you back precious warehouse space!

Our kitting & packaging capabilities include but are not limited to...

- » Multiple items into poly bags or boxes
- » Up to 12 items (6 lbs max per kit)
- » Low volume and high volume capabilities
- » Custom label with your logo & bar code
- » Lot traceable
- » Print and insert instruction sheets
- » Contact us today and let us help you with your custom packaging needs!



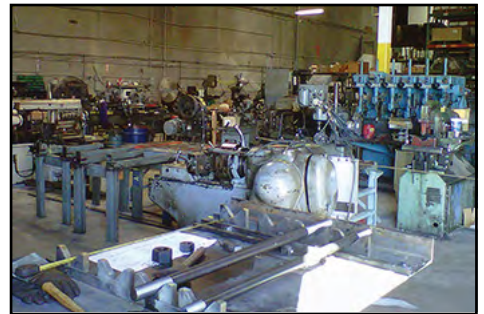
Not all items are represented in this book. Call your Duncan Bolt sales office for complete stock status.

Custom Manufacturing

Duncan Bolt offers custom in-house manufacturing at our Phoenix location. We can produce small and large runs of product from a wide range of materials. Raw material test reports are also available!

email: mfg@duncanbolt.com

- » Anchor Bolts
- » Sag Rods
- » Eye Bolts
- » U-Bolts
- » All Thread Rod
- » Studs
- » Specials
- » Galvanizing
- » Zinc Plating
- » Assembly
- » Welding
- » Cutting
- » Threading
- » Bending



Delivery Options

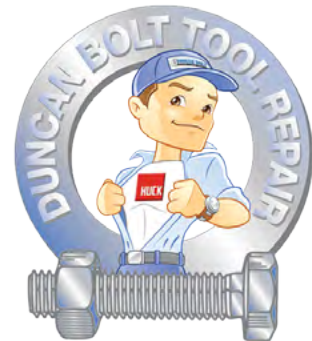
Prepaid local and job-site deliveries are available. Contact your Duncan Bolt Sales Representative for minimum order requirements!



Visit our Website www.duncanbolt.com

Our recently updated website has information you need at your fingertips! Here you'll find quick links to product information, trusted suppliers and more! It's also mobile friendly, so you can take it with you!

- » Products
- » Suppliers
- » Truck & Trailer
- » Tool Repair
- » Duncan Solar
- » Technical FAQ's
- » Industry Links
- » Chinese Site Link



For more information about tool repair
[email: toolrepair@duncanbolt.com](mailto:toolrepair@duncanbolt.com)

Contact Us

Duncan Bolt, Corporate

8535 Dice Rd.
Santa Fe Springs, CA 90670
Phone: (562) 698-8800
Fax: (562) 698-8831
[Email: sales@duncanbolt.com](mailto:sales@duncanbolt.com)

Duncan Bolt, Shanghai

Room 102, Building #17-II Donghua University Science Park
Lane 658 Jinzhong Road, Shanghai, China 200335
Phone: +86 (21) 5186-3340 Fax: +86 135 6438 3913
[Email: automotive@duncanbolt.com](mailto:automotive@duncanbolt.com)
[Website: http://www.duncanbolt.com.cn](http://www.duncanbolt.com.cn)

Duncan Bolt, Phoenix

2110 E. Raymond St Unit 104
Phoenix, AZ 85040
Phone: (602) 426-1422
Fax: (602) 426-1425
[Email: mfg@duncanbolt.com](mailto:mfg@duncanbolt.com)

Duncan Bolt, Mexico

Duncan Bolt de Mexico SA de CV
Anillo Vial Fray Junipero Serra # 16950
Bodega 19, Condominio Sotavento
Santiago de Queretero, Qro. CP 76147 Mexico
Tel (442) 690 6153
[Email: ventas@duncanbolt.com](mailto:ventas@duncanbolt.com)

Duncan Solar

1241 North Lakeview Drive Ste. C
Anaheim, CA 92807
Phone: (714) 696-7460
Toll Free (888) 977-SOLAR
Fax: (562)239-9589
[Email: info@duncansolar.com](mailto:info@duncansolar.com)
[Web: http://www.duncansolar.com](http://www.duncansolar.com)



Not all items are represented in this book. Call your Duncan Bolt sales office for complete stock status.

About Duncan Bolt

Since 1953 Duncan Bolt has been a trusted supplier of fasteners and installation tooling serving a wide variety of industries. We have the product knowledge and industry expertise to get you what you need without additional sourcing. In addition to standard fasteners, Duncan Bolt is also an authorized distributor of quality brands such as Huck, AVK, Red Head, Powers, Marson & Champion. We offer tool repair and rentals for most hydraulic and pneumatic riveters, custom fastener manufacturing and solar hardware and supplies. With locations in Santa Fe Springs, Anaheim, Phoenix, Shanghai and Mexico, Duncan Bolt is your one stop source!

Duncan Bolt
Santa Fe Springs, CA
562-698-8800

Duncan Solar
Anaheim, CA
714-967-7460

Duncan Bolt
Phoenix, AZ
602-426-1422

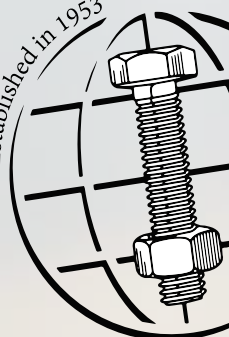
Duncan Bolt
Queretaro, Mexico
52-442-243-1035

Duncan Bolt
Shanghai, China
86-21-5186-3340



www.duncanbolt.com / 1-800-798-1939

Established in 1953



DUNCAN BOLT

One Stop Fastener Source for More Than 60 Years